



Edition 44: 11 April 2019

## From the Principal

## Term 1 Week 11

Thank you everyone for a wonderful term. Already, we have accomplished so much together in 2019. There have been many great educational and social interaction opportunities offered for students this term, valuable opportunities to enhance life skills, such as the Life Education Van program, the Stage 3 Forensic Science incursion and the Anti-bullying show "The Protectors". Students were able to be involved in the WWPS Swimming Carnival, the Young Leaders' day in Sydney and the Leaders' day at the Woy Woy Campus of Brisbane Water Secondary College as part of the Brisbane Water Learning Community, Harmony Day with the Chinese dancers performance and the Rumbalara excursions to involve our students in the content of the Environmental Education curriculum.

### **New P&C Executive**

Congratulations to the new P&C executive for 2019.

We have many new faces keen to support our school. I look forward to working with the new team in 2019 and as always know that when we all work together great things happen for our students, which is our main core business.

### **Woy Woy ANZAC March**

Every year Woy Woy Public School represents at the Woy Woy ANZAC March on the 25th April. Our school leaders proudly lead our school in the march. We encourage our students and their families to attend the march to give one and half-hours of your time on April 25th to be part of the Woy Woy community. We will be remembering those who gave of themselves, and in many cases their lives, to keep our country safe and free. The march begins at 10:00am. We will meet in the covered car park, at the Deep Water Plaza across from the Gloria Jean coffee shop, from 9:30am onwards. Students need to be in school uniform with hats and if possible with a sprig of Rosemary pinned on. Looking forward to seeing you all there.

### **Year 5 Opportunity Class Placement 2019**

The application process for Year 5 Opportunity Class placement in 2020 is about to begin. Important dates in the application process are as follows:

Tuesday 30 April 2019: Online applications open

Friday 17 May 2019: Online applications close (Parents and carers must apply by the due date.)

Wednesday 31 July 2019: Opportunity Class Placement Test

Parents and carers must apply online between Tuesday 30 April and Friday 17 May 2019 at:

<https://education.nsw.gov.au/public-schools/selective-high-schools-and-opportunity-classes/year-5>

Interested parents and carers must read Information about applying for Year 5 entry to an opportunity class in 2020 available at:

<https://education.nsw.gov.au/public-schools/selective-high-schools-and-opportunity-classes/year-5/information-for-applicants>

### **Easter Hat Parade**

Our annual Easter Hat parade is always a great hit with all of our community. The parade is always such fun. It is wonderful to see all of the different hat creations that are proudly paraded around under the COLA. The P&C have run an Easter competition to help raise funds for student resources for our school. A big thank you to our P&C. The Easter Bunny even made an appearance. Thank you everyone for your support with our special Easter Hat parade.

### **Term 2 begins**

All students will return to school on Tuesday 30th April 2019. Staff Development Day is Monday 29th April. Staff will be at school but it will be a pupil free day. Our school staff will be engaging in professional learning in various locations on that day. The professional learning ranges from Early Childhood sessions, special needs sessions and teaching and learning across the school in line with the School Plan and milestones for 2019.

May you all have a happy and relaxed holiday break. Enjoy time with family and friends and keep safe. We look forward to seeing you all back safe and sound for a fantastic Term 2.

Ona Buckley  
Principal

## **Positive Behaviour for Learning (PBL) Weeks 10 & 11**

For the last two weeks of Term 1, PBL lessons will focus on conflict resolution skills. Students will be encouraged to keep their hands and feet to themselves and to speak up for themselves instead of reacting physically if they become involved in a disagreement here at school. Teachers will also be focussing on the importance of asking teachers for help when students are experiencing problems on the playground. Students will be reminded that the 'safest', most sensible approach to dealing with conflict situations is get an adult to help resolve the matter.

On a related note, the school has spoken with a number of students and parents about inappropriate cyber interactions on websites such as Instagram and Facebook, and when gaming on Play Stations and the like. We strongly recommend that if you decide allow your child to access and use these forums, you encourage them to report any negative comments they receive to you, or better still, that you regularly monitor their interactions. We are increasingly finding children of primary school age don't have the requisite life experience to enable them to deal appropriately with conflicts that arise on social media platforms.

Students who successfully demonstrate positive behaviours in line with the 'Be Proud', 'Be Cooperative', 'Be Polite', 'Be Safe' and 'Be Responsible' school-wide expectations will be rewarded with Win Bin tickets and stars on their Star Charts.

Parents and carers are encouraged to discuss PBL expectations with their children. If you have any questions related to the school's PBL program or about student wellbeing policies and practices, please direct them to either myself or Ms Buckley.

Mr Dan Betts  
Assistant Principal (Student Wellbeing)

## 'SMS' Notifications regarding attendance

At Woy Woy Public School student safety and attendance is a high priority. To ensure parents and caregivers are aware of their child's absence the school has introduced the SENTRAL Daily Attendance 'SMS' system. This new system will use mobile phone Short Message Service (SMS) to send text messages to parents/guardians and caregivers to notify them of an unexplained absence or late arrival of their child.

From Monday 18 March, parents will be informed by mobile phone SMS each time their child is absent or late when an explanation has not already been provided to the school. If you receive an 'SMS' please contact the school to explain your child's absence. Please note that traditional forms of communication between parents and school staff regarding attendance are still acceptable. We are pleased to be able to offer this service to our families as we recognise that the safety of our children is everyone's highest priority.

Mrs Michelle Williams  
Assistant Principal (Attendance)

## NAPLAN Online

NAPLAN assesses the literacy and numeracy skills that each child needs to succeed in school and life. The NAPLAN tests are designed to help us make sure students are on track with their literacy and numeracy development. Students in Years 3, 5, 7 and 9 participate in NAPLAN tests for reading, writing, conventions of language (spelling, grammar and punctuation) and numeracy.

Between Tuesday 14<sup>th</sup> May and Friday 24<sup>th</sup> May, our school will participate in NAPLAN Online. Students do not need to be computer experts to take the NAPLAN test online. Making sure students have computer skills is part of our school curriculum, and our teachers will ensure your child is familiar with the online format. To see the types of questions and interactive features of NAPLAN Online, visit [the public demonstration site](https://www.nap.edu.au/online-assessment/public-demonstration-site). <https://www.nap.edu.au/online-assessment/public-demonstration-site>

If you have any questions about NAPLAN Online, please contact your child's teacher.

*For more information:*

- [How to support your child during NAPLAN](https://nap.edu.au/naplan/parent-carer-support)  
<https://nap.edu.au/naplan/parent-carer-support>
- [Information for parents and carers](http://www.nap.edu.au/docs/default-source/default-document-library/naplan-online-information-brochure-for-parents-and-carers.pdf)  
<http://www.nap.edu.au/docs/default-source/default-document-library/naplan-online-information-brochure-for-parents-and-carers.pdf>
- [Watch a video that explains NAPLAN Online](https://www.youtube.com/watch?v=3S1z6kUnRRE&feature=youtu.be)  
<https://www.youtube.com/watch?v=3S1z6kUnRRE&feature=youtu.be>
- [Subscribe to ACARA's monthly parent newsletter, Parent Update](https://confirmsubscription.com/h/j/0EF4811A90ACFBC1)  
<https://confirmsubscription.com/h/j/0EF4811A90ACFBC1>

Mrs Kate Lord  
Assistant Principal (Instructional Leader)

# Tell Them From Me Student Feedback Survey

(Term 2 Week 1)

Parent FAQ document for the student survey:

[http://surveys.cese.nsw.gov.au/images/TTFM\\_Student\\_Survey\\_FAQs\\_Parent\\_and\\_Carers\\_T12019.pdf](http://surveys.cese.nsw.gov.au/images/TTFM_Student_Survey_FAQs_Parent_and_Carers_T12019.pdf)

Early next term, our school, like many other public schools in the state, will participate in a Department of Education initiative: the *Tell Them From Me* student feedback survey. The survey measures factors that are known to affect academic achievement and other student outcomes. The focus of the NSW-wide survey is on student wellbeing, engagement and effective teaching practices.

More information about the survey is available at: <http://surveys.cese.nsw.gov.au>

The survey is a great opportunity for our students to provide us with valuable and quick feedback on what they think about school life, how engaged they are with school and the different ways that teachers interact with them. More than 6,300 schools in Australia and around the world have used *Tell Them From Me* to survey 5.4 million students. Capturing the voices of our students will help improve how we do things at our school.

I want to assure you that the survey is confidential. The survey is conducted online and will typically take less than 30 minutes to complete. It will be administered during school hours between 30 April and 9 May. Participating in the survey is entirely voluntary.

A consent form and FAQs for parents/carers about the survey has been sent home with students. If you **do not** want your child or children to participate, please return the form to school by Friday **12 April 2019**. Copies of the form and FAQs are available from: <http://surveys.cese.nsw.gov.au/information-for-parents>.

The consent form and FAQs are available in 23 languages.

Mrs Kate Lord

Assistant Principal (Instructional Leader)

## Deep Water Court Visit

On Friday the 6 April our Kindergarten students along with Student Representative Council members visited the residents of Deep Water Court Retirement Village. The students made masks and crowns for the occasion and entertained the residents with their wonderful singing. We would like to thank Thea and the residents of Deep Water Court for providing our Kindergarten students and Student Representative Council members with so many wonderful community engagement opportunities.





# Aspire Home Reading

Home Reading has commenced. Each Stage 1 student should be reading for at least 10 minutes per night, Stage 2 students for 20 minutes and Stage 3 for 30 minutes. This can include a mix of home readers and quality literature, and consist of parent reading, student reading and reading together. For helpful information on supporting your child during home reading (including building comprehension), please follow the links below:

<https://education.nsw.gov.au/public-schools/going-to-a-public-school/translated-documents/reading-with-your-child-at-home>

<https://www.det.nsw.edu.au/eppcontent/glossary/app/resource/factsheet/5402.pdf>

If you are able to assist in changing home readers please see your child's teacher.

Congratulations to the following students who have reached their 25 nights of home reading!

**25 Nights** Skyla Malloy 2MK, Mikayla Anderson 2MK, Kim Pearson 2MK, Xavier Pratt 2MK, Isla Muldoon 2MK, Liam Donnelly 2MK, Abby Stormont-Finch 2MK, Quinn Macleod 2MK, Eli Rende 2MK, Brock Sutherland 5/6R, Shae Ferguson 5/6R, Joshua Durrand 5/6H, Rebecca Hunter 5/6H, Jackson Dukes 3/6O, James Dukes 3/6O, Jack Sainty 1CP, Tyson Lowe 1CP, Ziva Brannigan 1CP, Lola Keating 1CP, Damian Cvetic 1CP, Bella-May Zurawski 1CP, Meisa Brown 1CP, Ricky Rosevear 1CP, Phoebe Van Der Neut 1CP, Nevaeh Markham 1CP, Violet Foxton 1CP, Cassara Tomlin 2E, Levi Young 2E, Bronte Packham 2E, Isabelle Sheppard 2E, Laura Jahn 2E, Chase Abbott 2MK, Cheyenne Phillips 2MK, Tyler Garrett 3/4T, Abby Donnelly 3/4T, Emma Gavin 2MK

**50 Nights** Patrick Matters 5/6H, Skyla Malloy 2MK, Abby Donnelly 3/4T

## Library News

A big thank you to all of the families who have returned their books this term. Please return any library books you might still have at home. Students are able to find out if they have books borrowed to their name during library lessons and lunchtime. The Stage 3 students should be able to check this using the OLIVER library system available by logging into their student portal.

All Book Club items have been distributed for this term. If you have not received yours, please see Mrs Walker. Thank you to the families who have placed orders this term. Every order provides free points for the school library, so we can purchase new titles for the students. Issue 3 and 4 will be available during Term 2. Don't forget that the LOOP platform is available for online ordering. Information about this can be found here: [http://www.scholastic.com.au/schools/bookclub/bc\\_parents.asp](http://www.scholastic.com.au/schools/bookclub/bc_parents.asp)

The NSW Premier's Reading Challenge has commenced. Kindergarten, Year 1, Year 2 and the students in the Disabilities classes are all participating in library time. Students in Stage 2 and 3 need to complete the online student reading log if they would like to participate. Students log in using their school username and password. Information on this can be found here: <https://online.det.nsw.edu.au/prc/home.html>

Mrs Walker  
Teacher Librarian

# Messages from the Office

## Important Parking Message

The staff parking area inside the school gates on both Park Road and Bowden Road is for **Staff Use Only**. Parents dropping and collecting their children from school, Music Bus or Cubbyhouse BASC are asked to park outside the school grounds and walk their children to and from their car. This is a Department of Education directive.

## Office Hours

School phones are manned from 8.30am until 3.15pm. The office window is opened at 8.30am and closed at 3.00pm however office staff are available until 3.15pm. There is a teacher on duty at the bus lines until 3.20pm.

## Changes to Going Home Arrangements

Could you please ensure that your child is aware of how they will be going home in the afternoon. If these arrangements change during the day it would be appreciated if you could contact the office prior to 2.00pm to ensure that the message is passed on to your child.

## Skoolbag APP and Website

You can download the WWPS Skoolbag APP to both iPhone and Android devices. Event updates and important information will be sent out via our Skoolbag APP and you can record your child's absence from school here as well. You will also find our School website at <http://www.woywoy-p.schools.nsw.edu.au/> which is regularly updated with events happening in our school. The School email address for correspondence is [woywoy-p.school@det.nsw.edu.au](mailto:woywoy-p.school@det.nsw.edu.au).

## Student Mobile Phones

Students who bring their mobile phone to school are asked to leave them at the office on their arrival and collect it at the end of the school day. Students are not permitted to have their phone with them during the day. It is also helpful if their name is on their phone.

## Late Arrival / Early Departure

If your child is late arriving to school or needs to leave early for an appointment, a partial absence slip is to be collected from the school office prior to going to your child's classroom. This slip is given to the classroom teacher.

## Payment of Money to the School

School fees and activity costs can be paid by credit card via the Woy Woy Public School website (<http://www.woywoy-p.schools.nsw.edu.au/>) using the 'Make a Payment' tab. If you are making a cash payment please place the money in an envelope with the child's name, class and the reason clearly noted. We have cash collection envelopes at the school office for your use. All money is to be given to your child's teacher. When making payments for multiple children, separate money and envelopes for each child is appreciated, as it is very time-consuming to sort out at the time of receipting.

Thank you

Linda Goldsmith – School Administrative Manager

# Assembly Awards – Week 10



Congratulations to the following recipients of our Academic Achievement Awards at our Week 10 K-6 Assembly.

Name	Class	Name	Class
Magnus Mykas	KB	Matthew Golds	K-6W
Emily McAuliffe	K/1M	Nixon Young	KW
Makhai Donovan	1CP	Louisa Morrison	1S
Abby Stormont-Finch	2MK	Levi Young	2E
Mason Bailey	3-6O	Delisha Pandya	2Y
Isabella Lumley	3/4LC	Alura Waltmann	3/4B
Bodhi Chapman	3/4T	Kobi Novak	3/4M
Becky Chang	5/6C	Blake Appleton	5/6B
Easun Zhang	5/6H	Talen Higgison	5/6R

## Upcoming Events

TERM 1 2019			
<b>Week 9</b>		<b>27</b>	Stage 3 photo day
<b>Week 10</b>	Apr	<b>1</b>	CARES Special Ed
		<b>5</b>	Cross Country
<b>Week 11</b>		<b>8</b>	Stage 3 Rumbalara
			CARES Special Ed
		<b>9</b>	Stage 3 Rumbalara
		<b>11</b>	Easter Hat Parade
		<b>12</b>	Last day of school



# Snack Shack News

Hats are available in the canteen for sale for your convenience.



\$13.00

*Thank you to all our volunteers for your help this term. Look forward to seeing you all again in Term 2.*

Anne

## P&C News



Our Annual General Meeting was held on Wednesday 27 March. Please thank the outgoing Executive Team for their hard work during 2018 building positive relationships within the school community and providing valuable resources for our students.

Welcome to the Incoming Executive Team

President – Laura Morrison  
 Vice President - Joshua Owen  
 Vice President - Megan Sai-Louie  
 Treasurer - Tracey McLennan  
 Secretary - Melissa Pritchard

Uniform Shop Co-ordinator - Sarah Greenwood  
 Fundraising Co-Ordinator - Gillian Graf  
 School Banking Co-ordinator - Emma Sheppard  
 Social Media Co-ordinator - Laura Morrison

We look forward to working with the school community to support positive learning outcomes for all students to achieve their personal best.

### Volunteering

You can make a difference! We are always looking for volunteers to assist with services provided by the P&C such as fundraising, school banking and the uniform shop. This is a great way to connect with the school and find out what is happening first hand. If you can spare some time and are interested in contributing in a small way, please contact [wwpspandc@live.com.au](mailto:wwpspandc@live.com.au) – [as little as half an hour can ease the workload of our dedicated volunteers and your child enjoys you being involved in school activities.](#)



## Fundraising

We're excited to offer some wonderful fundraising fun for the year ahead. We have the Easter Raffle and Easter Colouring competition to finish off Term 1 and the Mother's Day Stall to kick off Term 2.

### Easter Guessing Competition

Thank you to all of our school community for getting behind our Easter Guessing Competition. Each child received one book of raffle tickets to take home with additional books being requested. We're looking forward to handing out prizes to all our winners.

### Easter Colouring Competition

Our wonderful classroom teachers have been keeping the colouring competition entries safe in their classrooms. They will be judged by a local artist with winners announced at the Easter Hat Parade. All entries will be on display in the school hall.

### Mother's Day

With Mother's Day being early in Term 2, our annual Mother's Day stall will be during Week 2. Keep your eye out for updates in school notices.

## Uniform Shop

Ordering of uniforms and accessories is by email and payments on-line only. If you are unable to make on-line payments, alternative payment options can be arranged at time of ordering.

A uniform order form is attached to this newsletter for your convenience. Please email your order form to [wwpsuniforms@outlook.com](mailto:wwpsuniforms@outlook.com)

**Please do not make on-line payments to the school.** After full payment has been received, the orders will be distributed to your child's class by a volunteer once the order has been processed. An order form is attached to the newsletter.

## NEWS FLASH .... NEWS FLASH ... NEWS FLASH

Please check the embroidery on your blue polo shirts for the correct colour – red as there are a few still to be swapped. If it's orange, it will need to be swapped free of charge. Shirts can be returned with your child and we will gladly swap them over.

If you purchased a blue polo shirt from January 2019, please check it for incorrect orange embroidery as not all shirts have been returned. Your shirt can be returned with your child and we will gladly swap the correct embroidery for free.

We are still waiting on **size 4** stock and will advise a swapping day as soon as possible.

## END OF NEWS FLASH

## School Banking

**Thursday** is our school banking day for 2019. Don't forget to bring your bank books.

For parents/caregivers, the focus should be on a regular saving habit not the amount being deposited. If your child deposits 50c each week they will be earning rewards. Every time they make a deposit, they get a silver token (maximum one per week). Once they have 10 silver tokens (made 10 deposits) they can claim a prize. This is regardless of the amount of money deposited. This term they can redeem Polars Savers reward.

## **Membership**

The annual P&C membership fee is \$2.00 and this entitles you to participate in the democratic decision making process of the Association. If you are interested, P&C Membership forms for 2019/20 are now available from the school or by emailing [wwpspandc@live.com.au](mailto:wwpspandc@live.com.au)

Completed forms and membership fee can be placed in a sealed envelope and put in the P&C blue box in the school office or better still attend a meeting and find out firsthand what is happening within the school. Members do not have to attend every meeting, however your child, gets a buzz out of you being involved with the school. Your input and ideas are valued.

Wishing you all a happy Easter and safe break.

Until next time.

Laura Morrison

**President**

**WWPS P&C**



## WOY WOY PUBLIC SCHOOL P&C UNIFORM ORDER FORM

wwpsuniforms@outlook.com

**PLEASE DO NOT PAY VIA THE ONLINE SCHOOL PAYMENT SYSTEM**

ITEM	AVAILABLE SIZES	PRICE	SIZE	QTY	TOTAL
WWPS Short Sleeve Polo - Sky Blue	6 / 8 / 10 / 12 / 14 / 16 <del>XS</del>	\$ 26.00			
<i>Special Order (Adult sizing)</i>	S / M / L (Adult sizing)	\$ 27.00			
<del>Skorts</del>	6 / 8 / 10 / 12 / 14 / 16 <del>XS</del>	\$ 21.00			
Cargo Shorts	4 / 6 / 8 / 10 / 12 / 14 / 16 <del>XS</del>	\$ 21.00			
WWPS Fleecy Jacket	4 / 6 / 8 / 10 / 12 / 14 / 16 <del>XS</del>	\$ 25.00			
WWPS Fleecy Jumper	4 / 6 / 8 / 10 / 12 / 14 / 16 <del>XS</del>	\$ 25.00			
Cargo Pants	4 / 6 / 8 / 10 / 12 / 14 / 16 <del>XS</del>	\$ 24.00			
<b>SPORTS UNIFORM</b>					
<b>YELLOW "DAVIS" (A-F) - WWPS Sports Short Sleeve Polo Shirt</b>	6 / 8 / 10 / 12 / 14 / 16 <del>XS</del>	\$ 26.00			
<i>Special Order (Adult sizing)</i>	S / M / L (Adult sizing)	\$ 27.00			
<b>RED "SCOTT" (G-M) - WWPS Sports Short Sleeve Polo Shirt</b>	6 / 8 / 10 / 12 / 14 / 16 <del>XS</del>	\$ 26.00			
<i>Special Order (Adult sizing)</i>	S / M / L (Adult sizing)	\$ 27.00			
<b>GREEN "WEBB" (N-Z) - WWPS Sports Short Sleeve Polo Shirt</b>	6 / 8 / 10 / 12 / 14 / 16 <del>XS</del>	\$ 26.00			
<i>Special Order (Adult sizing)</i>	S / M / L (Adult sizing)	\$ 27.00			
WWPS Unisex Sports Shorts	4 / 6 / 8 / 10 / 12 / 14 / 16 <del>XS</del>	\$ 19.00			
<i>Special Order</i>	S / M / L (Adult sizing)	\$ 21.00			
WWPS Sports Jacket	6 / 8 / 10 / 12 / 14 / 16 <del>XS</del>	\$ 42.00			
<i>Special Order</i>	S / M / L (Adult sizing)	\$ 45.00			
<b>ACCESSORIES</b>					
WWPS Bucket Hats	XS / S / M / L	\$ 13.00			
Swim/Sports Eco Bag	One Size	\$ 13.00			
WWPS Mighty Tuff Backpack	24 L (Lifetime Warranty)	\$ 50.00			
<b>SPECIAL ORDER</b>					
Summer Tunic	4 / 6 / 8 / 10 / 12 / 14 / 16 <del>XS</del>	\$ 45.00			
Winter Tunic	4 / 6 / 8 / 10 / 12 / 14 / 16 <del>XS</del>	\$ 45.00			

Prices are subject to change without notice

**TOTAL**

Child's Name: \_\_\_\_\_

Class: \_\_\_\_\_

Parent/Guardian Name: \_\_\_\_\_

Phone: \_\_\_\_\_

Email Address for Invoice: \_\_\_\_\_

### PAYMENT OPTIONS

**PLEASE DO NOT PAY VIA THE SCHOOL ONLINE PAYMENT SYSTEM**

<input checked="" type="checkbox"/> EFTPOS	Please visit the Uniform Shop on opening day to pay via EFTPOS.
<input checked="" type="checkbox"/> CASH	Cash payments can be made at the Uniform Shop on opening day. Cash payments made via the office will be processed on the next Uniform Shop opening day. <i>Please note: correct money is preferred and appreciated as change is limited.</i>
<input checked="" type="checkbox"/> DIRECT DEPOSIT	Direct Deposit payments can be made using the following banking details: Account Name: WWPS P&C Uniform Shop BSB: 032-527 Account Number: 198689 Reference: Invoice Number
<input checked="" type="checkbox"/> Online	Order forms can be emailed to wwpsuniforms@outlook.com - upon receiving your order an invoice will be sent to your nominated email address. Once payment is received (by credit card online, direct deposit, EFTPOS or cash) your order will be either delivered to your child's classroom or can be collected at the Uniform Shop by arrangement.



# Compulsory School Attendance

Information for parents

Education for your child is important and regular attendance at school is essential for your child to achieve their educational best and increase their career and life options. NSW public schools work in partnership with parents to encourage and support regular attendance of children and young people. When your child attends school every day, learning becomes easier and your child will build and maintain friendships with other children.

## What are my legal responsibilities?

Education in New South Wales is compulsory for all children between the ages of six years and below the minimum school leaving age. The Education Act 1990 requires that parents ensure their children of compulsory school age are enrolled at, and regularly attend school, or, are registered with the Board of Studies, Teaching and Educational Standards for homeschooling.

Once enrolled, children are required to attend school each day it is open for students.

## The importance of arriving on time

Arriving at school and class on time:

- Ensures that students do not miss out on important learning activities scheduled early in the day
- Helps students learn the importance of punctuality and routine
- Give students time to greet their friends before class
- Reduces classroom disruption

Lateness is recorded as a partial absence and must be explained by parents.

## What if my child has to be away from school?

On occasion, your child may need to be absent from school. Justified reasons for student absences may include:

- being sick, or having an infectious disease
- having an unavoidable medical appointment
- being required to attend a recognised religious holiday
- exceptional or urgent family circumstance (e.g. attending a funeral)

Following an absence from school you must ensure that within 7 days you provide your child's school with a verbal or written explanation for the absence. However, if the school has not received an explanation from you within 2 days, the school may contact you to discuss the absence.

Principals may decline to accept an explanation that you have provided if they do not believe the absence is in the best interest of your child. In these circumstances your child's absence would be recorded as unjustified. When this happens the principal will discuss their decision with you and the reasons why.

Principals may request medical certificates or other documentation when frequent or long term absences are explained as being due to illness. Principals may also seek parental permission to speak with medical specialists to obtain information to collaboratively develop a health care plan to support your child. If the request is denied, the principal can record the absences as unjustified.

## Travel

Families are encouraged to travel during school holidays. If travel during school term is necessary, discuss this with your child's school principal. An *Application for Extended Leave* may need to be completed. Absences relating to travel will be marked as leave on the roll and therefore contribute to your child's total absences for the year.

In some circumstances students may be eligible to enrol in distance education for travel periods over 50 school days. This should be discussed with your child's school principal.



## My child won't go to school. What should I do?

You should contact the principal as soon as possible to discuss the issue and ask for help. Strategies to help improve attendance may include a referral to the school's learning and support team or linking your child with appropriate support networks. The principal may seek further support from the Home School Liaison Program to develop an Attendance Improvement Plan.

## What might happen if my child continues to have unacceptable absences?

It is important to understand that the Department of Education and Communities may be required to take further action where children of compulsory school age have recurring numbers of unexplained or unjustified absences from school.

Some of the following actions may be undertaken:

- Compulsory Schooling Conferences

You may be asked, along with your child, to attend a Compulsory Schooling Conference. The conference will help to identify the supports your child may need to have in place so they attend school regularly. The school, parents and agencies will work together to develop an agreed plan (known as Undertakings) to support your child's attendance at school.

- Application to the Children's Court – Compulsory Schooling Order

If your child's attendance at school remains unsatisfactory the Department

may apply to the Children's Court for a *Compulsory Schooling Order*. The Children's Court magistrate may order a Compulsory Schooling Conference to be convened.

- Prosecution in the Local Court
- School and Department staff remain committed to working in partnership with you to address the issues which are preventing your child's full participation at school. In circumstances where a breach of compulsory schooling orders occurs further action may be taken against a parent in the Local Court. The result of court action can be the imposition of a community service order or a fine.

## What age can my child leave school?

All New South Wales students must complete Year 10 or its equivalent. After Year 10, and up until they reach 17 years of age, there are a range of flexible options for students to complete their schooling.

## Working in Partnership

The Department of Education and Communities recognises that working collaboratively with students and their families is the best way to support the regular attendance of students at school.

We look forward to working in partnership with you to support your child to fulfil their life opportunities.

If a student misses as little as 8 days in a school term, by the end of primary school they'll have missed over a year of school.

Further information regarding school attendance can be obtained from the following websites:

Policy, information and brochures:

Please visit the Department of Education's *Policy library*

## The school leaving age:

Please visit the Department of Education's *Wellbeing and Learning website*

## Do you need an interpreter?

Interpreting services are available on request, including for the hearing impaired. The Telephone Interpreter Service is available 24 hours a day, seven days a week on 131 450. You will not be charged for this service.

For further advice and questions contact your educational services team

T 131 536

Learning and Engagement

Student Engagement & Interagency Partnerships

T 8244 512

[www.dec.nsw.gov.au](http://www.dec.nsw.gov.au)

© February 2015

NSW Department of Education and Communities



# NAPLAN Online – information for parents and carers

## Why do students do NAPLAN?

The National Assessment Program – Literacy and Numeracy (NAPLAN) assesses literacy and numeracy skills that are essential for every child to progress through school and life. Students in Years 3, 5, 7 and 9 participate in the annual NAPLAN tests in reading, writing, conventions of language (spelling, grammar and punctuation) and numeracy.

The assessment provides parents and schools with an understanding of how individual students are performing at the time of the tests. NAPLAN is just one aspect of a school's assessment and reporting process - it does not replace ongoing assessments made by teachers about student performance.

NAPLAN also provides schools, education authorities and governments with information about how education programs are working and whether young Australians are meeting important educational outcomes in literacy and numeracy.

## What is assessed?

NAPLAN assesses literacy and numeracy skills that students are learning through their regular school curriculum. All government and non-government education authorities have contributed to the development of NAPLAN materials.

In 2019 most students across Australia will sit NAPLAN online.

Feedback in the first year of NAPLAN Online showed that students engaged well with online assessments. One of the main benefits of NAPLAN Online is tailored (or adaptive) testing, where the test automatically adapts to a student's test performance. The test presents questions of higher or lower complexity, depending on a student's performance.

Tailored (or adaptive) testing is designed to assess a wider range of student abilities and to measure student achievement more precisely. Your child should not be concerned if they find questions more challenging than usual; they may be taking a more complex test pathway. A student's overall NAPLAN score is based on the number and complexity of questions they answer correctly.

## Participation in NAPLAN

All students in Years 3, 5, 7 and 9 are expected to participate in the annual NAPLAN assessment.

Students with disability may qualify for adjustments that reflect the support normally provided for classroom assessments. You should first discuss the use of any disability adjustments for your child with your child's teacher.

A formal exemption may be granted for a student with disability that severely limits their capacity to participate in the assessment, or for a student who has recently arrived in Australia and has a non-English speaking background.

Your school principal and your local test administration authority can give you more information on NAPLAN Online disability adjustments or the process required to gain a formal exemption.

## NAPLAN Online 2019 timetable

The assessment window for NAPLAN Online is extended from three days provided for the paper test to nine days. This is to give schools more flexibility in scheduling and accommodate schools that may have fewer devices. The NAPLAN Online assessment window starts on Tuesday 14 May and finishes on Friday 24 May 2019.

The online tests must be taken in the following order:

Test	Duration	Order	Details
Writing	Year 3: 40 min. Year 5: 40 min. Year 7: 40 min. Year 9: 40 min.	To be completed in the first two days	Year 3 students do a paper-based writing test on day one only
Reading	Year 3: 45 min. Year 5: 50 min. Year 7: 65 min. Year 9: 65 min.	To be completed after the writing test	Students read a range of informative, imaginative and persuasive texts
Conventions of language	Year 3: 45 min. Year 5: 45 min. Year 7: 45 min. Year 9: 45 min.	To be completed after the reading test	This test includes spelling, grammar and punctuation
Numeracy	Year 3: 45 min. Year 5: 50 min. Year 7: 65 min. Year 9: 65 min.	To be completed after the conventions of language test	This test includes number and algebraic measurement and statistics and probability

## What if my child is absent from school on assessment days?

Where possible, schools may arrange for individual students who are absent at the time of testing to complete missed tests at another time during the school's test schedule. Individual students are not permitted to sit NAPLAN online tests after Friday 24 May 2019.

## How is my child's performance measured?

Individual student performance is shown on a national achievement scale for each assessment. A result at the national minimum standard indicates that the student has demonstrated the basic literacy and numeracy skills needed to participate fully in that year level.

A NAPLAN individual student report will be issued by your child's school later in the year. If you do not receive a report, you should contact your child's school.

## How are NAPLAN results used?

- Students and parents may use individual results to discuss progress with teachers.
- Teachers use results to better identify students who would benefit from greater challenges or extra support.
- Schools use results to identify strengths and areas to improve in teaching programs, and to set goals in literacy and numeracy.
- School systems use results to review programs and support offered to schools.
- The community can see average school NAPLAN results at [myschool.edu.au](https://myschool.edu.au)

## Where can I get more information?

For more information about NAPLAN:

- contact your child's school
- contact your local test administration authority at [nap.edu.au/TA](https://nap.edu.au/TA)
- visit [nap.edu.au](https://nap.edu.au)

For information about how personal information for NAPLAN is handled by ACARA, visit [nap.edu.au/naplanprivacy](https://nap.edu.au/naplanprivacy)





# Woy Woy Public School

## PBL Behaviour Consistency Guide



Physical Contact	Arguing / Defiance	Verbal Bullying/ Harassment
Incidental or careless contact while playing	Indistinct mutterings or low level negative comment(s)	Isolated inoffensive or unintended put-down
Deliberate (but low-level) contact	Lack of respect in tone, manner and body language	Isolated but hurtful put-down
Hitting or striking with intent to hurt	Aggressive tone along with refusal to comply and/or offensive language	Repeated or sustained put-downs
		Use of highly offensive put-downs
Non-Compliance	Property Damage	Inappropriate/ Abusive Language
Slow to comply with requests	Accidental breakage due to careless use	Swearing when shocked or in pain
Needed to be asked a number of times before complying.	Accidental breakage due to deliberate misuse	Deliberately swearing when communicating with others
Refusal to comply with request	Intentional damage, including deliberate breakage, graffiti or vandalism	Abusive language directed at other students or teachers
Removal of self without compliance – walking away		Use of sexually explicit language
Disruptive Behaviour	Inappropriate Use of Technology	Out Of Bounds
Calling out/ talking while the teacher is speaking or failure to remain on-task	Forgot to hand in electronic device to office	Unintentional presence in an OOB area when wandering
Repeated instances of disruptive behaviour and time spent at the BOT	Isolated but deliberate non-compliance with handing in electronic device	Presence in OOB area for a sustained period
Spot over the course of a day/ week		Presence in OOB area in which there is some risk to self
Deliberately disrupting classmates, refusal to comply with teacher instructions and aggressive manner after time spent at BOT spot	Use of personal devices or school ICT equipment to harass or upset other students (cyberbullying)	Presence in OOB area and deliberately breaking school rules (stealing, damaging property, fighting etc)
	Intentional misuse or damage of school ICT equipment	
Lack of Equipment	Classroom Attendance	Possession of Banned Item/ Object
Not having correct equipment in class	Late to class when returning from a break – isolated incident	Possession of banned item(s) – first offence but complied with request for submission
Regularly failing to bring the required equipment*	Late to class when returning from a break – repeat offence	Possession of banned item(s) – repeat offence or argumentative
* Only blue level if willfully negligent with equipment (ie. no teacher correction or negative consequence if parents have failed to provide for student)	Leaving the classroom without permission and not returning for a sustained period	Possession of a dangerous or potentially harmful banned item or weapon
	Not returning to class after a break	

**Key:** Green = Teacher correction procedure

Blue = Referral to executive

Red = Removal from classroom or playground

## PBL Behaviour Consistency Guiding Questions to Pose

Physical Violence	Arguing / Defiance	Harassment - DHV
How serious is the contact?	Under your breath.	What about staff?
The red zone is intentional.	Entering a power struggle.	Staff need to record actions
Motivation behind the act	Trying to provoke a response.	Student orientated
	NCI	After hours implications?
	Targeted at staff	
	Rudeness to staff	
Failing to follow instructions	Damage Of Property/ Vandalism	Swearing/ Inappropriate Language
Lower level than arguing but leads on.	Misuse of equipment?	What about the incidental verbal abuse of staff member?
Passive/aggressive	Is the intent	Talk about overhearing a student calling a teacher names but not directly.
To do with task completion		
Aggressive Play / Hands Off?	Inappropriate Use Of Technology/Equipment	Out Of Bounds
Rough play that may escalate.	Need to define the phones!	Not following the principle of right place, right time, all the time.
Against the rules is more serious.	Bush lawyer element.	
Play by the rules.		

Lack of Equipment	Classroom Attendance	Possession of Banned Item
At what point is there communication home?	This could be leaving class early, taking too long out of class or going without permission.	Talking about permanent markers, gum, lighters, spray cans, etc
Offer of Student Assistance	Out of Class, Need a Pass!	Potential to be confiscated without provocation. Low level.
Have a support plan in place for countering the inevitable.	Staff could deal with repeated offenses with consistent follow up.	Gentle reminder not followed
Maybe subject specific requirements.	Persistent infractions is where the student doesn't care.	There may be differences in the actual item.
		Mandatory banned item needs instant attention

**REMEMBER** – this is a process that staff must go through together- IT IS A SUPPORTING DOCUMENT. Positive replacement behaviours **MUST BE TAUGHT** in PBL lessons.

*Whooping cough affects people of all ages. It can be especially serious for babies. Vaccination reduces the risk of infection and severe disease.*

# Whooping Cough (Pertussis)

Last updated: 28 June 2018

## What is whooping cough?

Whooping cough can be a life threatening infection in babies. Whooping cough in babies can lead to apnoea (pauses in normal breathing), pneumonia, feeding problems and weight loss, seizures, brain damage and, in some cases, death. Older children and adults can get whooping cough too and pass it on to babies.

## What are the symptoms?

- Whooping cough usually begins like a cold with a blocked or runny nose, tiredness, mild fever and a cough.
- The cough gets worse and severe bouts of uncontrollable coughing can develop. Coughing bouts can be followed by vomiting, choking or taking a big gasping breath which causes a "whooping" sound. The cough can last for many weeks and can be worse at night.
- Some newborns may not cough at all but they can stop breathing and turn blue. Some babies have difficulties feeding and can choke or gag.
- Older children and adults may just have a cough that lasts for many weeks. They may not have the whoop.

## How is it spread?

- Whooping cough is spread when an infectious person coughs bacteria into the air which can be inhaled by people nearby. If they are not treated early, people with whooping cough are infectious in the first three weeks of their illness.
- Whooping cough spreads easily through families, childcare centres and at school.

## Who is at risk?

- Anyone can get whooping cough. People living in the same household as someone with whooping cough are especially at risk.
- Immunisation reduces the risk of infection but immunity fades over time. You can still get whooping cough even if you've been immunised.

## How is it prevented?

Whooping cough vaccines provide good protection from infection but immunity fades which means that boosters are needed.

## Immunisation for babies

- Babies need to be immunised at 2 months, 4 months, 6 months and 18 months. The first dose can be given as early as 6 weeks of age.

- Getting your baby vaccinated on time gives them some protection when they are most at risk of severe illness.
- If your baby's vaccines are overdue, see your GP now to catch up.

## Immunisation for older children

- A whooping cough booster is needed at 4 years of age.
- Check if your child has been vaccinated. Look at their Blue Book, speak to your GP or ring the Australian Immunisation Register on 1800 653 809.
- A second whooping cough booster is given in high school through the NSW School –based Vaccination Program.

## Immunisation for adults

A booster for adults is recommended for:

- women who are in the third trimester of pregnancy, preferably at 28 weeks. Free vaccine is provided through GPs and hospital antenatal clinics.
- other adult household members, grandparents and carers of infants under 12 months of age.
- adults working with young children, especially health care and child care workers.

## If you are a close contact of someone with whooping cough:

- If you have been exposed to someone with whooping cough early in their illness while they are infectious, watch out for symptoms and see your doctor if you get a new cough.
- Some babies and some pregnant women need antibiotics to prevent whooping cough infection if they have had significant contact with an infectious person.

## How is it diagnosed?

Your doctor may ask about your symptoms and whether you've had any contact with whooping cough. If your doctor thinks you have whooping cough, a swab from the back of the nose or throat can confirm the diagnosis.

## How is it treated?

- Some babies may need treatment in hospital or in intensive care.
- Antibiotics are used to treat whooping cough in the early stages and can help prevent spreading whooping cough to others. People who are not treated early with the right antibiotics can spread the infection in the first 3 weeks of their illness. After 5 days of antibiotics, you are normally no longer infectious.
- The cough often continues for many weeks, despite antibiotics.

## What is the public health response?

Doctors and laboratories must confidentially notify cases of pertussis to the local public health unit. Public health unit staff can advise on the best way to stop further spread.

Infectious children are restricted from going to pre-school and school. Unimmunised contacts may be excluded from child care unless they take the special antibiotics.

## Identify – Protect – Prevent

NSW Health whooping cough campaign: <http://www.health.nsw.gov.au/Infectious/whoopingcough/Pages/default.aspx>

For further information please call your local public health unit on 1300 066 055 or visit the New South Wales Health website [www.health.nsw.gov.au](http://www.health.nsw.gov.au)

## WWPS - Term 2 2019

[illegible]



# Please support our sponsors:

**HOME**  
TIMBER & HARDWARE  
GO WHERE THE TRADIES GO

**CAMPBELL**  
BUILDING MATERIALS  
PH 4341 1411  
OPEN 7 DAYS  
FOR ALL YOUR TIMBER, PAINT &  
HARDWARE SUPPLIES  
182 Blackwall Road, Woy Woy



Ph: 4341 3922

6 mths - Adult.  
Heated indoor pool.  
AustSwim qualified instructors.  
5 Mutu Street, Woy Woy NSW 2256

Learn to swim. For all Ages.

aquasplash@yahoo.com

**Bakers Delight**  
We're for real.  
Woy Woy

Shop 30 Railway Street  
Woy woy NSW 2256  
Ph: 4339 4941

Stephen McPhee M.P.S. B.Pharm (Owner)  
**Ettalong Pharmacy**  
249 Ocean View Road  
Ettalong Beach NSW 2257  
Ph: 4341 3338  
Fax: 4341 3834  
Email - ettpharm@gmail.com

**Chemsave**  
Essential Savings

Business hours ... Monday to Friday 8:30am to 5:30pm  
Saturday 8:30am to 12:30pm

*Is this the best chemist in the world, ever ?*

**DANCIN'ALITY**  
www.dancinallity.com.au Ph.4342 1195  
**MAKE YOUR MOVE**  
Come & Join the Peninsula's Leading Dance Studio  
2yrs to Adults - Suitable for Girls & Boys - Beginners to Adv Levels  
Qualified Teachers - Fully Equipped Studios  
RAD CLASSICAL BALLET - BAL JAZZ - TAP & HIP HOP - CHEER  
CONTEMPORARY - ACROBATICS - DRAMA - MUSICAL THEATRE  
CABARET - FITDANCE - BOYS ONLY HIP HOP & BREAK CLASS  
Also Offering Certificate II, III & IV in Dance  
**CONTACT US TODAY**



**Born 2 Rock Music School**  
**Music Lessons**  
**FREE TRIAL - FIRST LESSON**  
Guitar - Drums - Bass - Vocal - Keyboard  
Rock - Punk - Blues - Pop - Metal  
**0411 893 141 www.born2rock.com.au**  
4/2 Carnarvon Rd, West Gosford

**Crazy BARGAIN WAREHOUSE**

P: (02) 4343 1774 Shop 1, Pavilion Building  
29-37 George Street, Woy Woy, NSW, 2256

**STRATFORD MUSIC**

Piano - Guitar - Vocals - Drums - Violin - Viola  
Bass - Ukulele - Theory - Band & Ensemble  
stratfordmusic.com.au 4344 5809

**PARTY PUNCH**  
KIDS BIRTHDAY PARTIES  
BOOKINGS AVAILABLE  
CHANGE FITNESS & MARTIAL ARTS - 24 ALMA AVENUE WOY WOY  
Call Jase on 0433 321 273 or Kath on 0403 953 201  
email: changefitness@live.com

**LEARN TO SURF TERM 4 PROGRAM ONLY \$190pp!!**

@ Umina Beach

- 8 x 90min lessons (1 per week)
- Starts Term 4 from Monday 22<sup>nd</sup> October
- Weekdays 4.15pm
- Saturdays: 9am & 11am
- Sundays: 1pm

\*Tuesdays is 'Little Groms' (5yr-7yr), Wednesdays is 'Teens group' (12yr+). All other days = mixed ages  
• Includes soft surfboards, wetsuits, 2 coaches & surf education.

**BOOK NOW**

www.salssurfschool.com or call Sal on 0415 881 301



**PETER FLYNN BA. DIP.ED. TESOL**  
**ENGLISH LANGUAGE TUTOR**  
Specialising in Tutoring overseas students  
Will come to your home (Gosford area)

Mob: 0405546744  
Home: 0243282221  
Email: peterflynnmail@gmail.com

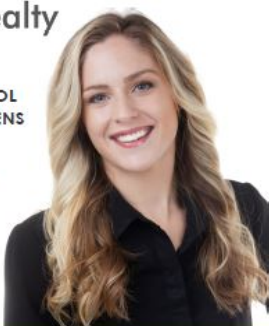


**Central Coast Realty**

REFER A FRIEND OR MENTION  
THIS AD & WOY WOY PUBLIC SCHOOL  
WILL RECEIVE \$500 TOWARDS CHILDENS  
EDUCATION!

FOR EVERY PROPERTY CENTRAL COAST REALTY  
LISTS AND SELLS BY SOMEONE WHO MENTIONS  
THIS AD, WE WILL GIVE \$500 TO THE SCHOOL  
TO GO TOWARDS EDUCATION AND SUPPLIES!

JODIE WARREN 0431 484 552  
jodie@centralcoastrealty.net





## Get on and Rock! At Your School!



### The Music Bus brings music education and fun to your school.

#### About The Music Bus

The Music Bus visits over 250 schools a week, bringing music into the lives of over 4,000 students across Australia.

The Music Bus is the classroom (the bus!), teacher, instruments and curriculum all in one complete package – and it's at your school.

Made up of weekly half hour lessons, The Music Bus is fun, engaging and will inspire your child each and every week.

#### our programs

The Music Bus offers modern and rock-style courses, using well-known songs to engage students at all ability levels. High quality instruments are provided and our experienced teachers use extensive backing tracks, developing confidence, rhythm and teamwork.



Cost: \$16 per weekly 30 min lesson (Drums \$18)

#### why we're different

- 1. We come to your school:** We offer all students, regardless of background or prior experience, specialist instrument lessons right on school grounds. That means less travel time for busy families.
- 2. We're affordable:** Our lessons are around half the price of private tuition. We also supply all the instruments during class, taking the burden off having to buy one right away.
- 3. Learning is fun:** The customised curriculum is set in a fun environment, focusing on music reading, playing, arranging and performing to help build skills and self-esteem - with lots of fun competitions and awards throughout the term.
- 4. Glowing reviews:** The award winning Music Bus program has received positive feedback from the Dept of Ed and NSW Creative Arts Department – not to mention from countless parents and Principals in your community.

#### what others are saying

*"The Music Bus is fun, exciting and engages students in a wide variety of musical experiences at all ability levels and areas of interest including instrumental and vocal."* Marle, Principal, NSW.

*"The teacher is a highly motivated and extremely professional."* Principal, QLD

*"My daughter loves The Music Bus. It's an activity she can do in school hours – otherwise she probably would not be able to attend. It's such a great asset to have at school."* Jade, Parent, QLD

*"My son comes home enthusiastic about learning and practising his instruments."* Naomi, Parent, NSW

*"It's so great being at school. They are learning something new each week and the rapport the teacher has with the kids is wonderful."* Sarah, Parent, NSW

Top instrumental band have previously secured four parents and school Principals requiring The Music Bus, however, some schools may be charged for priority sessions.



If you like what you hear and would like to book lessons for your child contact us today.

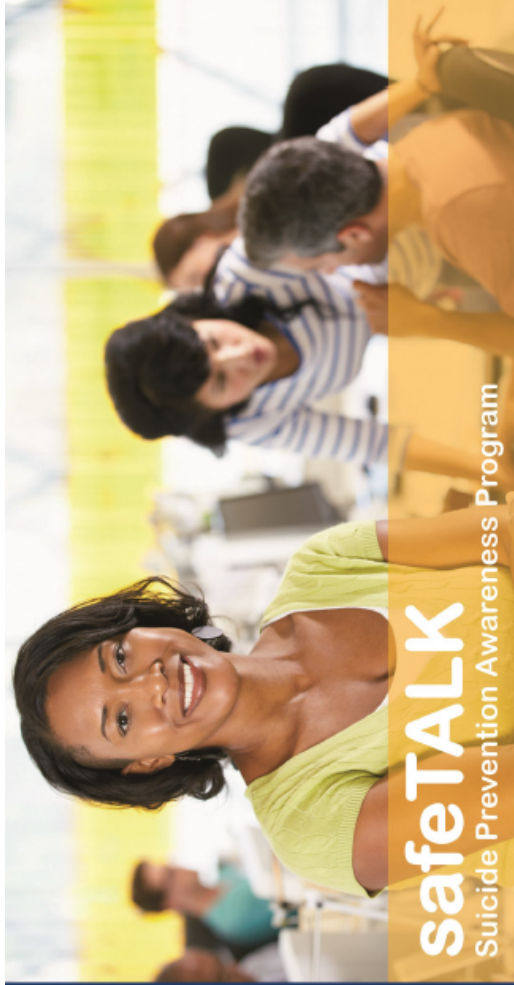
**BOOK NOW – phone 1300 168 742  
or visit [www.themusicbus.com.au](http://www.themusicbus.com.au)**

**Not at your school yet? No problem – get in touch regardless and we can help get you started!**

Note: Music Bus lessons are also available at Southern Cross, OGCN, and Hume School.

**BOOK  
NOW!**





# safeTALK

## Suicide Prevention Awareness Program

LivingWorks safeTALK is a half-day presentation to increase suicide awareness.

This program alerts community members to signs that a person may be considering suicide. It acknowledges that while most people at risk of suicide signal their distress and invite help, these intervention opportunities are often overlooked.

safeTALK participants learn to recognise when someone may have thoughts of suicide and to respond in ways that link them with further suicide intervention help. Suicide alert helpers contribute to a suicide safer community. It is intended that safeTALK participants will be better prepared to:

- Recognise that invitations to help are often overlooked
- Move beyond common tendencies to miss, dismiss and avoid conversations around suicide
- Notice and respond to situations in which thoughts of suicide may be present
- Apply basic TALK steps (Tell, Ask, Listen, and KeepSafe)
- Connect the person with thoughts of suicide to suicide first aid help and further community resources

Suicide alert community members are better prepared to become a vital link in connecting people at risk with further help.

safeTALK is designed to complement the LivingWorks ASIST workshop (Applied Suicide Intervention Skills Training).

The programs share the same beliefs about suicide and preventing suicide. However, each presentation has a specific role.



Lifeline is a not-for-profit organisation that promotes, preserves and protects life. The mission of our training division is to build community capacity and skills for life through a range of specialised training programs to meet the needs of individuals and groups.

For further information  
Contact Dr June Anderson  
Phone 02 4940 2000  
Email [june.anderson@lifeline.org.au](mailto:june.anderson@lifeline.org.au)  
[www.lifelinehunter.org.au](http://www.lifelinehunter.org.au)



Crisis Support. Suicide Prevention.



## Community Giving Space at the Peninsula Community Centre

### Open your Pantry, Open Your Heart.



Donations are required for our Free Pop Up Op Shop - the Giving Space - on 11/4/19, to support local families in financial distress at our Bring Your Bills Day Event.

### We are seeking donations from families in our local community - from your home to the home of families in need.

Donations of good quality items like toothpaste, shampoo, feminine hygiene products, soaps, non - perishable food items, nappies, Manchester, clothing and books.

Thank you for supporting our Centre and our community.

All donations can be dropped off any week day from 10am-4pm to Peninsula Community Centre, 93 McMasters Rd, Woy Woy. Please call us on 4341 9333 if you require any further information.



We also need good quality babies and children's clothes. Thank you for any assistance you can provide. Michelle Remy, Centre Manager.

Proudly supported by East Gosford,  
Ettalong, Kincumber, Lisarow and  
Wyong **Community Bank**® branches



## 28th April 2019 Mount Penang Parklands

Have fun, enjoy some exercise and fresh air whilst  
supporting Coast Shelter and other local charities.

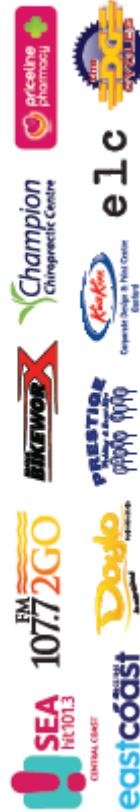
Take the challenge and register online as an individual or team!

Cycling challenges for...

- Children
- Beginners (20k)
- Intermediate (50k)
- Elite riders (100k)



**Rotary**  
Club of Erina  
Club of Gosford North



[www.centurychallenge.com.au](http://www.centurychallenge.com.au)



Proudly supported by East Gosford,  
Ettalong, Kincumber, Lisarow and  
Wyong **Community Bank**® branches



## Kids Cycle Challenge

9.00am ★ 28th April 2019 ★ Mount Penang Gardens

- ★ Fun Activities
- ★ Jumping Castle
- ★ Children's Loop Ride
- ★ Obstacle Course Ride
- ★ Great prizes!

**Prizes for  
best-dressed  
super hero!**

The Kids Challenge allows  
junior riders a safe cycling  
environment to challenge  
themselves and have some  
fun! The ride is open to cyclists  
aged between 4 and 12 years.



Supported by Woy Woy



**Rotary**  
Club of Erina  
Club of Gosford North



[www.centurychallenge.com.au](http://www.centurychallenge.com.au)



## Central Coast Library Service News Primary School

Central  
Coast  
Council

Library  
Service

Term 2, 2019

### Welcome to our newsletter for Term 2, 2019!

Do your students need help with assignments and homework? Central Coast Library Service is available to come out and show students and teachers how to use our extensive range of online resources - contact us anytime:

- Beckie Copland - Children and Young Adults Librarian  
Beckie.Copland@centralcoast.nsw.gov.au
- Kira Paznikov - Acting Information Services Librarian  
kira.paznikov@centralcoast.nsw.gov.au
- Michelle Goldsmith - Family History and Digitisation Librarian  
Michelle.Goldsmith@centralcoast.nsw.gov.au

### BARK! Reading Program

Some children may be hesitant to read with a parent or carer. BARK! is a unique program that provides children with the opportunity to practice reading to a specially trained, non-judgemental assistance dog. BARK dogs are trained through the Delta Therapy Dogs Program.

There are still adorable animals waiting to be read to at Kincumber Library and Umina Library, so please don't hesitate to get in touch. This program runs during school terms only.

Contact 4304 7013 for more information or to secure a place.



### School Holiday Activities

School holidays are fast approaching - check out what your children can get involved in these April School Holidays.

Our school holiday programs features a variety of free events for ages 4-17 years.

Try your hand at escape rooms, Easter egg cup decorating, Easter biscuits, cupcake decorating or an Xbox One FIFA World Cup challenge.

Special visits also include:

- Manga/Anime workshops by artist Matthew Lin
- Superhero acrobatics show and workshop by Action Reaction Entertainment
- Native Animal Show by Australian Wildlife Displays

Contact your local library branch or book online at [centralcoast.nsw.gov.au/libraryevents](http://centralcoast.nsw.gov.au/libraryevents)

Bateau Bay | Erina | Gosford | Karingah | Kincumber | Lake Haven  
The Entrance | Toukley | Tuggerah | Umina | Woy Woy  
[centralcoastnsw.gov.au/jointhelibrary](http://centralcoastnsw.gov.au/jointhelibrary)  
Join the library and enjoy the **FREE**DOM



## SCHOOL HOLIDAY TENNIS CAMP NOTICE

**Where: UMINA TENNIS, Umina**

**When: Monday 15<sup>th</sup> April - Friday 19<sup>th</sup> April**

**Time: 9am-3pm (gates open @ 8am)**

**Cost: Wk \$80, ½ Day Wk \$50,**

**Full Day \$25, ½ Day \$15**

**Before & After camp care available on request 7am-6pm**

**Included: Racquets, Sausage Sizzle Thursday, Prizes Friday**

The camp will be predominately tennis with other activities such as soccer, cricket, basketball etc to keep the children occupied. The camps are held wet or fine with indoor activities provided.

Bookings not essential.

All enquiries can be made by phoning

Kristy 0410 828 278.





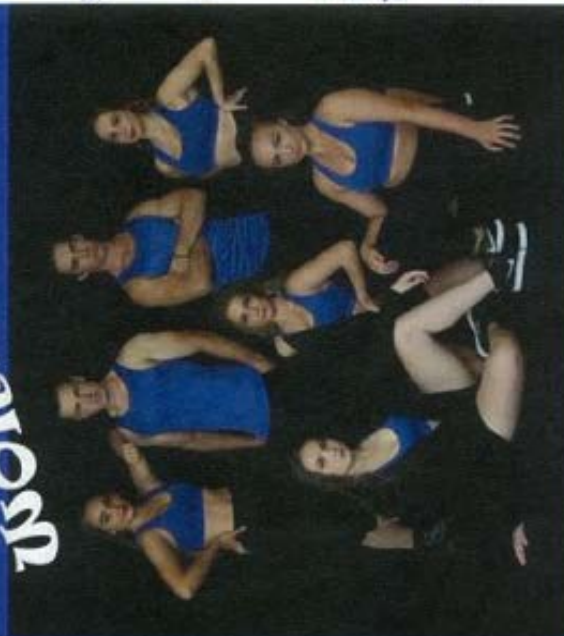
Our Popular Hip Hop / Break Dance Workshop is a 60 Minute interactive and action packed class run by some of best in the Biz!

Dancers will learn how to Pop, Lock, Glide, Wave & Tut as well try some of our favourite breakdance moves in a very energetic learning environment.

The workshop will finish with a demonstration by the Instructors and a short photo op with the crew!

**Suitable for  
Boys & Girls  
aged 5-14  
years**

# HIP HOP BREAK DANCE WORKSHOP



## Coming to a Location Near You:

Everglades Country Club, Mingara Recreation Club &  
Central Coast Leagues Club  
15th & 16th April

*Numbers are Limited — Bookings Essential*

[dancetheatrick@hotmail.com](mailto:dancetheatrick@hotmail.com)

[dancetheatrick.wixsite.com/dancetheatrick](http://dancetheatrick.wixsite.com/dancetheatrick)

## School Holiday Music Therapy Programs

*Achieving health and wellbeing through music therapy*

### Day 1 Beginner

LENGHT: 2 hours

Using a range of materials including rice, pasta, beads, bottles, and eggs; we will be exploring how size and quantity create changes in pitch dynamics and tone.

### Day 2 Intermediate

LENGHT: 2 ½ hours

The instruments created during day 2 add a layer of complexity to those of day 1. Participants will be working on their cognitive skills of perception, recognition, discrimination and categorization.

### Day 3 Advanced

LENGHT: 3 hours

Participants make a ukulele from a kit. This process will work on decision making skills, problem solving skills as well as providing a sense of accomplishment with the completion on their instrument.



Music Therapy CENTRAL COAST

**For more information**

Phone. 0431 535 823

[centralcoastmusictherapy.com.au](http://centralcoastmusictherapy.com.au)

I ♥  
ndis  
#ndisready

NDIS  
REGISTERED  
PROVIDER