



Edition 43: 22 March 2019

## From the Principal

## Term 1 Week 8

### School photos

Thank you for making sure your children were looking their very best for the school photos. The Preschool Seahorse group and students from Years 1 to 4 wore their best smiles and were beautifully behaved on Monday 11th March for our visiting photographers. The Preschool Pelican group put on their best smiles on Thursday 14th March. Next week Stage 3 will have their photos on Wednesday 27th March, which will include staff, school leaders and house captain photos as well. Always such lovely memories as children grow and change through their educational journey.

### Leaders Investiture

Well done to all our 2019 leaders who proudly received their badges at the Leaders Investiture assembly on 18th March. It was indeed a proud time for our students and their families. We know they will make our school proud in 2019. Congratulations to all our leaders.

### Harmony Day

So wonderful to see our students dressed in a scope of orange on our celebration of Harmony Day. The Chinese Dancers were loved by our students and certainly gave them a taste of a different culture of a nation who are our very near neighbours. We are a multicultural nation and we are a multicultural school where Everyone belongs!

Just a couple of things to ponder on.

### Use of school car parks

Our school car parks are only for staff cars, special needs transport and delivery transport for the school. No parents or children should be walking through car parks at arrival times before school and pick up times after school. Such a dangerous thing to do. Please do not come in the gate and take a shortcut over the lawn area where the pencils are and on through the car park to the playground. Take the time to walk along the path to the playground. It could save a nasty incident. Teachers are parking at that time of the day. They are not expecting children and parents to be walking around them. Keep your children safe and be a role model for their safe behaviour. Thank you for supporting the school with this very important safety matter.

### Expected behaviour on school grounds

We always say to our students once inside the school grounds the school rules apply. This also applies to school staff, any visitors to our school and our parent community. Everyone has the right to feel safe and valued on school grounds. Everyone needs to show respect for each other and the environment where they are. We must always remember "Children are what they see and hear". Be their example, show them how to be respectful and always display appropriate behaviour on school grounds.



Have another sunny but cooler fortnight

Ona Buckley  
Principal

## Positive Behaviour for Learning (PBL) Weeks 8 & 9

For the next two weeks we will be teaching students about the importance of 'Being Polite' when going to the canteen. Discussions will focus on lining up and being patient while waiting in line, and on the importance of saying please and thank you to Anne and her wonderful crew of canteen helpers.

Students who successfully demonstrate positive behaviours in the classroom, on the playground and when visiting the canteen will be rewarded with Win Bin tickets and stars on their Star Charts.

Parents and carers are encouraged to discuss PBL expectations with their children. If you have any questions related to the school's PBL program or about student wellbeing policies and practices, please direct them to either myself or Ms Buckley. One such question, "What sorts of behaviours correspond to a child receiving a B on their Star Chart, as opposed to an 'I'?" was passed on to me earlier this week. I have attached a copy of the school's 'Behaviour Response Consistency Guide' (taken from the school's Student Wellbeing Policy document available on our website) at the end of this edition of the Namalata. The document focuses on common categories of problematic behaviour, and within each category, identifies what that behaviour might look like as the behaviour becomes progressively more serious and what level of response is deemed appropriate in each instance. For example, under the category heading 'Physical Contact' the document recommends the following interventions:

Incidental or careless contact while playing – Teacher to use correction procedures

Physical aggression including deliberate (but low-level) contact – Referral to executive

Hitting or striking with intent to hurt – Referral to executive and removal from classroom or playground.

The example above illustrates that the school does not condone any instances of deliberate physical violence. Such behaviour will result in time spent in the Planning Room and the recording of a 'B' on a student's Star Chart.

Mr Dan Betts  
Assistant Principal (Student Wellbeing)

### The 'Bullying! No Way! National Day of Action

Last Friday, our school joined hundreds of school's around the country in celebrating the 2019 National Day of Action Against Bullying and Violence. Students were presented with wristbands to wear on the day and posters encouraging students to take a stand against bullying were put up in classrooms and around the school. Students watched video presentations and participated in a variety of lessons/discussions addressing the issue of bullying in our society.

We sent students home with a card with tips on how to combat bullying and what to do if they are being bullied. We also sent parent cards home to the parents of students in Years 3 to 6. (We have a few extra copies left so if anyone would like one please ask at the office). The parent pocket cards presented tips on what to do if your child talks to you about bullying. Information on the parents cards is re-produced below. Parents know their children best and know the best way to tailor communication to their needs. Adapt these tips to what works for you and your child.



If your child talks to you about bullying:

1. Listen calmly and get the full story. Your calm response is important to allow your child to tell you all about the situation. After they've told you their story, ask questions to get more details if you need: who, what, where, when. Although you may feel some strong emotions about your child's experience, try to keep calm to avoid more distress to your child.
2. Reassure your child they are not to blame. Many children blame themselves and this may make them feel even worse. You could say things like, 'That sounds really hard to deal with. No one should have to put up with that.' or 'I'm so glad you told me. You should be able to feel safe at school; that's not fair at all'.
3. Ask your child what they want to do and what they want you to do. A critical part of your response is to avoid jumping in to solve the problem. While it is natural to want to protect your child, helping them to find their own solution is a better option. It helps them feel they have some power in the situation.
4. Visit [www.bullyingnoway.gov.au](http://www.bullyingnoway.gov.au) to find some strategies. The website has tips and ideas for different bullying situations. One idea is to practise strategies at home to help your child feel more confident.
5. Contact the school. Your child may be reluctant for you to do this, so discuss the idea and reassure them that the school would want to know and is able to help. Make an appointment to meet with your child's teacher and, if you need to, ask to talk with the principal. Contact the school immediately if you have a concern about your child's safety.
6. Check in regularly with your child. Keep the conversation going. It can take time to resolve issues, so check in regularly with your child about their experiences and their feelings. Your ongoing support is important.

If you are looking for support for yourself to deal with a bullying situation, you will find ideas on the Bullying. No Way! website for parents. As well, please feel free to contact the school if you would like to discuss any aspect of our approach to preventing bullying.

At Woy Woy Public School we aim to create a safe and supportive school community for everyone.

Thanks for your support to make WWPS a great school for everyone.

Mr Dan Betts

Assistant Principal (Student Wellbeing)

## **'SMS' Notifications regarding attendance**

At Woy Woy Public School student safety and attendance is a high priority. To ensure parents and caregivers are aware of their child's absence the school has introduced the SENTRAL Daily Attendance 'SMS' system. This new system will use mobile phone Short Message Service (SMS) to send text messages to parents/guardians and caregivers to notify them of an unexplained absence or late arrival of their child.

From Monday 18 March, parents will be informed by mobile phone SMS each time their child is absent or late when an explanation has not already been provided to the school. If you receive an 'SMS' please contact the school to explain your child's absence. Please note that traditional forms of communication between parents and school staff regarding attendance are still acceptable. We are pleased to be able to offer this service to our families as we recognise that the safety of our children is everyone's highest priority.



# Southern Central Coast Zone Swimming Carnival

Congratulations to all our students who attended the Zone Swimming on Tuesday 12<sup>th</sup> March. All our students were exceptionally well behaved and competed well in their events, securing places in their heats. It was a great day.

## Harmony Day

On Wednesday 20 March 2019 our wonderful Woy Woy Public School students were entertained by the talented Chinese Folk Dancers. Students rotated classrooms and participated in a variety of activities all promoting the message that 'Everyone Belongs'.

We are proud of the diversity and inclusivity Woy Woy Public School offers and enjoyed celebrating this special day as a whole school community.



## Cultural Dance Group



On Thursday our Cultural Dance Group performed at St John the Baptist Preschool for Harmony Day. Our Year 1- Year 6 students entertained the preschool with traditional Torres Strait Islands songs and songs originating from the Yorta Yorta language. The students performed a dance item to a delighted group of children and enjoyed mixing with younger members of our community. Strengthening relationships with a range of community members and offering performance opportunities to our talented students is a priority at Woy Woy Public School. We thank St John the Baptist Preschool for inviting us to perform and we look forward to visiting again soon. For any interested students The Cultural Dance Group meets each Wednesday at recess in the hall or the library.





## Home Reading

Home Reading has commenced. Each Stage 1 student should be reading for at least 10 minutes per night, Stage 2 students for 20 minutes and Stage 3 for 30 minutes. This can include a mix of home readers and quality literature, and consist of parent reading, student reading and reading together. For helpful information on supporting your child during home reading (including building comprehension), please follow the links below:

<https://education.nsw.gov.au/public-schools/going-to-a-public-school/translated-documents/reading-with-your-child-at-home>

<https://www.det.nsw.edu.au/eppcontent/glossary/app/resource/factsheet/5402.pdf>

If you are able to assist in changing home readers please see your child's teacher.

## Aspire Home Reading



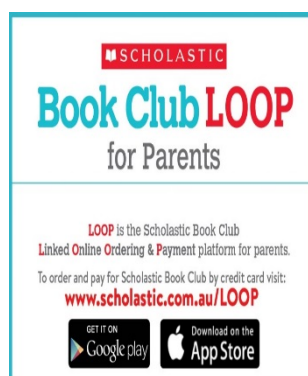
Congratulations to the following students who have reached their 25 nights of home reading!

**25 Nights** Ian Lumley 5/6H, Rylee Stait 5/6H, Gabriella Potestas 5/6H, Noel Donnelly 5/6H and Lily Fairleigh 5/6H

## Library News

Book Club Issue 2 is now available to order from. Orders are due by 25<sup>th</sup> March.

Thanks, Mrs Walker and Mrs Barrett





# Messages from the Office

## Important Parking Message

The staff parking area inside the school gates on both Park Road and Bowden Road is for **Staff Use Only**. Parents dropping and collecting their children from school, Music Bus or Cubbyhouse BASC are asked to park outside the school grounds and walk their children to and from their car. This is a Department of Education directive.

## Office Hours

School phones are manned from 8.30am until 3.15pm. The office window is opened at 8.30am and closed at 3.00pm however office staff are available until 3.15pm. There is a teacher on duty at the bus lines until 3.20pm.

## Changes to Going Home Arrangements

Could you please ensure that your child is aware of how they will be going home in the afternoon. If these arrangements change during the day it would be appreciated if you could contact the office prior to 2.00pm to ensure that the message is passed on to your child.

## Skoolbag APP and Website

You can download the WWPS Skoolbag APP to both iPhone and Android devices. Event updates and important information will be sent out via our Skoolbag APP and you can record your child's absence from school here as well. You will also find our School website at <http://www.woywoy-p.schools.nsw.edu.au/> which is regularly updated with events happening in our school. The School email address for correspondence is [woywoy-p.school@det.nsw.edu.au](mailto:woywoy-p.school@det.nsw.edu.au).

## Student Mobile Phones

Students who bring their mobile phone to school are asked to leave them at the office on their arrival and collect it at the end of the school day. Students are not permitted to have their phone with them during the day. It is also helpful if their name is on their phone.

## Late Arrival / Early Departure

If your child is late arriving to school or needs to leave early for an appointment, a partial absence slip is to be collected from the school office prior to going to your child's classroom. This slip is given to the classroom teacher.

## Payment of Money to the School

School fees and activity costs can be paid by credit card via the Woy Woy Public School website (<http://www.woywoy-p.schools.nsw.edu.au/>) using the 'Make a Payment' tab. If you are making a cash payment please place the money in an envelope with the child's name, class and the reason clearly noted. We have cash collection envelopes at the school office for your use. All money is to be given to your child's teacher. When making payments for multiple children, separate money and envelopes for each child is appreciated, as it is very time-consuming to sort out at the time of receipting.

Thank you

Linda Goldsmith – School Administrative Manager



# Assembly Awards – Week 8



Congratulations to the following recipients of our Academic Achievement Awards at our Week 8 K-6 Assembly.

Name	Class	Name	Class
Aidan Betts	K-6PC	Fynn McCall	K-6W
Taylor Wols	KB	Annika Graham	KW
Daisy Cassidy	K/1M	Abby Wang	1S
Amelia Pitchers	1CP	Cassara Tomlin	2E
Charlie Hall	2MK	Noah Brown	2Y
Nate Wilden	3-6O	Kyo Yamada	3/4B
Jake Golds	3/4LC	Emmalyn Castronuevo	3/4M
Toby Cridland	3/4T	Timothy Bakker-Huxley	5/6B
Ava Ayres	5/6C	Mira Kaassamany	5/6R
Jazmyn Tutauha	5/6H		

## Upcoming Events

TERM 1 2019			
<b>Week 9</b>		<b>27</b>	Stage 3 photo day
<b>Week 10</b>	Apr	<b>1</b>	CARES Special Ed
		<b>5</b>	Cross Country
<b>Week 11</b>		<b>8</b>	Stage 3 Rumbalara
			CARES Special Ed
		<b>9</b>	Stage 3 Rumbalara
		<b>11</b>	Easter Hat Parade





# Snack Shack News

Monday	11/3	Alice
Tuesday	12/3	Pat
Wednesday	13/3	Vicki
Thursday	14/3	Kay
Friday	15/3	Janet
Monday	18/3	Janet
Tuesday	19/3	Pat
Wednesday	20/3	Vicki
Thursday	21/3	Janet
Friday	22/3	Rita
Monday	25/3	Alice
Tuesday	26/3	Pat
Wednesday	27/3	Janet
Thursday	28/3	Kay
Friday	29/3	Janet

Hats are available in the canteen for sale for your convenience.

\$13.00



*Thank you to our volunteers. If you are unable to come in on your allocated day please contact Anne as soon as possible so an arrangement can be made for a replacement.*

*We now have JELLY Apple and Blackcurrant Jelly \$1.00.*

*Thankyou*

*Anne*



## P&C NEWS

### Volunteering

You can make a difference! We are always looking for volunteers to assist with services provided by the P&C such as fundraising, school banking and the uniform shop. This is a great way to connect with the school and find out what is happening first hand. If you can spare some time and are interested in contributing in a small way, please contact [wwpspandc@live.com.au](mailto:wwpspandc@live.com.au) – as little as half an hour can ease the workload of our dedicated volunteers and your child enjoys you being involved in school activities.

### Fundraising

No further updates available.

### Uniform Shop

Ordering of uniforms and accessories is by email and payments on-line only. If you are unable to make on-line payments, alternative payment options can be arranged at time of ordering. A uniform order form is attached to this newsletter for your convenience. Please email your order form to [wwpsuniforms@outlook.com](mailto:wwpsuniforms@outlook.com)

Please do not make on-line payments to the school. After full payment has been received, the orders will be distributed to your child's class once a week on Thursday by a volunteer. Cut-off day for delivery on Thursday is Wednesday each week. An order form is attached to the newsletter.

## NEWS FLASH .... NEWS FLASH ... NEWS FLASH

As advised in the last edition of the newsletter the embroidery on some of the blue polo shirts provided by our manufacturer this year was not the correct colour. The new shirts from size 6 have arrived for replacement!

If you purchased a blue polo shirt from January 2019, please check it for incorrect orange embroidery as not all shirts have been returned. Your shirt can be returned with your child and we will gladly swap the correct embroidery for free.

We are still waiting on size 4 stock and will advise a swapping day as soon as possible.

## END OF NEWS FLASH

### School Banking

Thursday is our school banking day for 2019. Don't forget to bring your bank books.

For parents/caregivers, the focus should be on a regular saving habit not the amount being deposited. If your child deposits 50c each week they will be earning rewards. Every time they make a deposit, they get a silver token (maximum one per week). Once they have 10 silver tokens (made 10 deposits) they can claim a prize. This is regardless of the amount of money deposited. This term they can redeem Polars Savers reward.



## Annual General Meeting Date

The Annual General Meeting is scheduled for Wednesday 27 March 2019 commencing at 7.00pm in the Staff Room of Woy Woy Public School. All positions will be declared vacant with nominations being called for Office Bearers and other positions.

The President is responsible for:

- The successful functioning of the P&C Association meetings
- The attainment of the P&C Association's objectives
- Ensuring that the P&C Association takes part in decision-making processes in the school
- Fostering fair participation of all members and ensuring that all new members are made to feel welcome
- Supporting volunteers
- Consistent adherence to the constitution
- Acting as the P&C Association's spokesperson when public statements or actions are needed
- Setting up lines of communication with the Principal
- Being signatory on the Association's bank accounts
- Chairing meetings. In the absence of the President, one of the Vice-Presidents will chair the meeting or the meeting can elect a chairperson from the members present for that meeting.

The role of the Vice President is to support the President.

The Secretary is responsible for carrying out the administrative tasks related to the decisions of the meetings as resolved, as well as preparing the meeting agendas, receiving and tabling correspondence, writing and dispatching outgoing correspondence as resolved/appropriate, maintains the official records of the Association, such as the constitution, by-laws, rules of subcommittees, Incorporation Certificate, ABN details, list of financial (voting) members, Minutes, and Attendance book.

The role of the Treasurer is to receive and deposit monies, maintains records, draws cheques, electronically transfer funds and present accounts at meetings as well as planning, budgeting and cash flow of the Association.

We also call for nominations for Fundraising Convenor and Sub-Committee members, Uniform Shop Convenor, School Banking Co-ordinator and other representative roles.

Should you require additional information, please contact [wwspandc@live.com.au](mailto:wwspandc@live.com.au)

## Next Meeting

The meeting will follow the AGM on Wednesday 27 March in the Staff Room, Woy Woy Public School. We look forward to seeing familiar faces return and welcoming new families to our community. All are welcome to attend.

## Membership

The annual P&C membership fee is \$2.00 and this entitles you to participate in the democratic decision making process of the Association. If you are interested, P&C Membership forms for 2019/20 are now available from the school or by emailing [wwspandc@live.com.au](mailto:wwspandc@live.com.au)

Completed forms and membership fee can be placed in a sealed envelope and put in the P&C blue box in the school office or better still attend a meeting and find out firsthand what is happening within the school.



## Cyber Awareness Forum

Do you know what your children are up to? Do you know the consequences of online actions? Do you want to know how to protect them?

Please join Central Coast Council of P&Cs as they host the E-Safety Commission and friends to discuss the key things you need to know in this 21st century social world. This is a great event and opportunity to find out relevant information about cyberspace and the current risks our children face.

When: Thursday 28 March 2019

Time: 6:40 PM – 09:00 PM

Where: Mingara Recreation Club, Tumby Umbi NSW 2261, Australia

Please note this is a child free event and you can register for this event at <https://www.cccpandc.org/cyberaware2019>

Until next time.

Tina Jackson  
President  
WWPS P&C





Woy Woy Public School of Parents and Citizens Association Inc.  
ABN & ACNC: 15 364 243 614

## WOY WOY PUBLIC SCHOOL P&C UNIFORM ORDER FORM

FROM TERM 4, 2018 UNIFORMS ARE MOVING TO ORDERING BY EMAIL ONLY. EMAIL ORDERS TO: [wwpsuniforms@outlook.com](mailto:wwpsuniforms@outlook.com)

[wwpsuniforms@outlook.com](mailto:wwpsuniforms@outlook.com)

**PLEASE DO NOT PAY VIA THE ONLINE SCHOOL PAYMENT SYSTEM**

ITEM	AVAILABLE SIZES	PRICE	SIZE	QTY	TOTAL
WWPS Short Sleeve Polo - Sky Blue	6 / 8 / 10 / 12 / 14 / 16 xs	\$ 26.00			
<i>Special Order (Adult sizing)</i>	S / M / L (Adult sizing)	\$ 27.00			
Skorts	6 / 8 / 10 / 12 / 14 / 16 xs	\$ 21.00			
Cargo Shorts	4 / 6 / 8 / 10 / 12 / 14 / 16 xs	\$ 21.00			
WWPS Fleecy Jacket	4 / 6 / 8 / 10 / 12 / 14 / 16 xs	\$ 25.00			
WWPS Fleecy Jumper	4 / 6 / 8 / 10 / 12 / 14 / 16 xs	\$ 25.00			
Cargo Pants	4 / 6 / 8 / 10 / 12 / 14 / 16 xs	\$ 24.00			
<b>SPORTS UNIFORM</b>					
<b>YELLOW "DAVIS" (A-F) - WWPS Sports Short Sleeve Polo Shirt</b>	6 / 8 / 10 / 12 / 14 / 16 xs	\$ 26.00			
<i>Special Order (Adult sizing)</i>	S / M / L (Adult sizing)	\$ 27.00			
<b>RED "SCOTT" (G-M) - WWPS Sports Short Sleeve Polo Shirt</b>	6 / 8 / 10 / 12 / 14 / 16 xs	\$ 26.00			
<i>Special Order (Adult sizing)</i>	S / M / L (Adult sizing)	\$ 27.00			
<b>GREEN "WEBB" (N-Z) - WWPS Sports Short Sleeve Polo Shirt</b>	6 / 8 / 10 / 12 / 14 / 16 xs	\$ 26.00			
<i>Special Order (Adult sizing)</i>	S / M / L (Adult sizing)	\$ 27.00			
WWPS Sports Shorts	4 / 6 / 8 / 10 / 12 / 14 / 16 xs	\$ 19.00			
<i>Special Order</i>	S / M / L (Adult sizing)	\$ 21.00			
WWPS Sports Jacket	6 / 8 / 10 / 12 / 14 / 16 xs	\$ 42.00			
<i>Special Order</i>	S / M / L (Adult sizing)	\$ 45.00			
<b>ACCESSORIES</b>					
WWPS Bucket Hats	XS / S / M / L	\$ 13.00			
Swim/Sports Eco Bag	One Size	\$ 13.00			
WWPS Mighty Tuff Backpack	24 L (Lifetime Warranty)	\$ 50.00			
<b>Subject to Availability (Minimum Order Required 6-12 weeks delivery)</b>					
<b>SPECIAL ORDER</b>					
Summer Tunic	4 / 6 / 8 / 10 / 12 / 14 / 16 xs	\$ 45.00			
Winter Tunic	4 / 6 / 8 / 10 / 12 / 14 / 16 xs	\$ 45.00			

Prices are subject to change without notice

**TOTAL**

Child's Name: \_\_\_\_\_

Class: \_\_\_\_\_

Parent/Guardian Name: \_\_\_\_\_

Phone: \_\_\_\_\_

Email Address for Invoice: \_\_\_\_\_

### PAYMENT OPTIONS

**PLEASE DO NOT PAY VIA THE SCHOOL ONLINE PAYMENT SYSTEM**

✓ EFTPOS Please visit the Uniform Shop on opening day to pay via EFTPOS.

✓ CASH Cash payments can be made at the Uniform Shop on opening day. Cash payments made via the office will be processed on the next Uniform Shop opening day.

Please note: correct money is preferred and appreciated as change is limited.

✓ DIRECT DEPOSIT Direct Deposit payments can be made using the following banking details:

Account Name: WWPS P&C Uniform Shop

BSB: 032-527

Account Number: 198689

Reference: Invoice Number

✓ Online Order forms are to be emailed to [wwpsuniforms@outlook.com](mailto:wwpsuniforms@outlook.com) - upon receiving your order an invoice will be sent to your nominated email address. Once payment is received (by credit card online, direct deposit, EFTPOS or cash) your order will be delivered to your child's classroom by a volunteer.

FROM TERM 4, 2018 UNIFORMS ARE MOVING TO ORDERING BY EMAIL ONLY. EMAIL ORDERS TO: [wwpsuniforms@outlook.com](mailto:wwpsuniforms@outlook.com)



# Compulsory School Attendance

Information for parents

Education for your child is important and regular attendance at school is essential for your child to achieve their educational best and increase their career and life options. NSW public schools work in partnership with parents to encourage and support regular attendance of children and young people. When your child attends school every day, learning becomes easier and your child will build and maintain friendships with other children.

## What are my legal responsibilities?

Education in New South Wales is compulsory for all children between the ages of six years and below the minimum school leaving age. The Education Act 1990 requires that parents ensure their children of compulsory school age are enrolled at, and regularly attend school, or, are registered with the Board of Studies, Teaching and Educational Standards for homeschooling.

Once enrolled, children are required to attend school each day it is open for students.

## The importance of arriving on time

Arriving at school and class on time:

- Ensures that students do not miss out on important learning activities scheduled early in the day
- Helps students learn the importance of punctuality and routine
- Give students time to greet their friends before class
- Reduces classroom disruption

Lateness is recorded as a partial absence and must be explained by parents.

## What if my child has to be away from school?

On occasion, your child may need to be absent from school. Justified reasons for student absences may include:

- being sick, or having an infectious disease
- having an unavoidable medical appointment
- being required to attend a recognised religious holiday
- exceptional or urgent family circumstance (e.g. attending a funeral)

Following an absence from school you must ensure that within 7 days you provide your child's school with a verbal or written explanation for the absence. However, if the school has not received an explanation from you within 2 days, the school may contact you to discuss the absence.

Principals may decline to accept an explanation that you have provided if they do not believe the absence is in the best interest of your child. In these circumstances your child's absence would be recorded as unjustified. When this happens the principal will discuss their decision with you and the reasons why.

Principals may request medical certificates or other documentation when frequent or long term absences are explained as being due to illness. Principals may also seek parental permission to speak with medical specialists to obtain information to collaboratively develop a health care plan to support your child. If the request is denied, the principal can record the absences as unjustified.

## Travel

Families are encouraged to travel during school holidays. If travel during school term is necessary, discuss this with your child's school principal. An Application for Extended Leave may need to be completed. Absences relating to travel will be marked as leave on the roll and therefore contribute to your child's total absences for the year.

In some circumstances students may be eligible to enrol in distance education for travel periods over 50 school days. This should be discussed with your child's school principal.



## My child won't go to school. What should I do?

You should contact the principal as soon as possible to discuss the issue and ask for help. Strategies to help improve attendance may include a referral to the school's learning and support team or linking your child with appropriate support networks. The principal may seek further support from the Home School Liaison Program to develop an Attendance Improvement Plan.

## What might happen if my child continues to have unacceptable absences?

It is important to understand that the Department of Education and Communities may be required to take further action where children of compulsory school age have recurring numbers of unexplained or unjustified absences from school.

Some of the following actions may be undertaken:

- Compulsory Schooling Conferences

You may be asked, along with your child, to attend a Compulsory Schooling Conference. The conference will help to identify the supports your child may need to have in place so they attend school regularly. The school, parents and agencies will work together to develop an agreed plan (known as Undertakings) to support your child's attendance at school.

- Application to the Children's Court – Compulsory Schooling Order

If your child's attendance at school remains unsatisfactory the Department

may apply to the Children's Court for a *Compulsory Schooling Order*. The Children's Court magistrate may order a Compulsory Schooling Conference to be convened.

- Prosecution in the Local Court School and Department staff remain committed to working in partnership with you to address the issues which are preventing your child's full participation at school. In circumstances where a breach of compulsory schooling orders occurs further action may be taken against a parent in the Local Court. The result of court action can be the imposition of a community service order or a fine.

## What age can my child leave school?

All New South Wales students must complete Year 10 or its equivalent. After Year 10, and up until they reach 17 years of age, there are a range of flexible options for students to complete their schooling.

## Working in Partnership

The Department of Education and Communities recognises that working collaboratively with students and their families is the best way to support the regular attendance of students at school.

We look forward to working in partnership with you to support your child to fulfil their life opportunities.

If a student misses as little as 8 days in a school term, by the end of primary school they'll have missed over a year of school.

Further information regarding school attendance can be obtained from the following websites:

Policy, information and brochures:

Please visit the Department of Education's *Policy Library*

The school leaving age: Please visit the Department of Education's *Wellbeing and Learning* website

## Do you need an interpreter?

Interpreting services are available on request, including for the hearing impaired. The Telephone Interpreter Service is available 24 hours a day, seven days a week on 131 450. You will not be charged for this service.

For further advice and questions contact your educational services team

T 131 536

Learning and Engagement

Student Engagement & Interagency Partnerships

T 0244 512

[www.dec.nsw.gov.au](mailto:www.dec.nsw.gov.au)

© February 2015

NSW Department of Education and Communities



# NAPLAN Online – information for parents and carers



2019

## Why do students do NAPLAN?

The National Assessment Program – Literacy and Numeracy (NAPLAN) assesses literacy and numeracy skills that are essential for every child to progress through school and life. Students in Years 3, 5, 7 and 9 participate in the annual NAPLAN tests in reading, writing, conventions of language (spelling, grammar and punctuation) and numeracy.

The assessment provides parents and schools with an understanding of how individual students are performing at the time of the tests. NAPLAN is just one aspect of a school's assessment and reporting process - it does not replace ongoing assessments made by teachers about student performance.

NAPLAN also provides schools, education authorities and governments with information about how education programs are working and whether young Australians are meeting important educational outcomes in literacy and numeracy.

## What is assessed?

NAPLAN assesses literacy and numeracy skills that students are learning through their regular school curriculum. All government and non-government education authorities have contributed to the development of NAPLAN materials.

In 2019 most students across Australia will sit NAPLAN online.

Feedback in the first year of NAPLAN Online showed that students engaged well with online assessments. One of the main benefits of NAPLAN Online is tailored (or adaptive) testing, where the test automatically adapts to a student's test performance. The test presents questions of higher or lower complexity, depending on a student's performance.

Tailored (or adaptive) testing is designed to assess a wider range of student abilities and to measure student achievement more precisely. Your child should not be concerned if they find questions more challenging than usual; they may be taking a more complex test pathway. A student's overall NAPLAN score is based on the number and complexity of questions they answer correctly.

## How can I help my child prepare?

Help your child prepare by reassuring them that NAPLAN is just one part of their school program, and by reminding them on the day to simply try their best. Teachers will ensure students are familiar with the types of questions in the tests and will provide appropriate support and guidance. Ensuring students are familiar with using devices, typing on them and navigating through programs are a part of student learning and a requirement of the Australian Curriculum from the first year at school.

ACARA does not recommend excessive preparation for NAPLAN or the use of coaching providers. NAPLAN is about assessing learning progress in literacy and numeracy.

## Will my child sit NAPLAN on paper or online?

In 2019, your child will sit the NAPLAN online tests. However, children in some other schools across Australia will sit the NAPLAN paper tests this year. Federal, state and territory education ministers have agreed that all schools will move online by 2020. State and territory education authorities will determine when their schools move online.

As students are assessed on the same literacy and numeracy curriculum content, regardless of whether they complete the test online or on paper, results for both formats can be reported on the same NAPLAN assessment scale. To find out more about NAPLAN Online, visit [nap.edu.au](http://nap.edu.au)

## Participation in NAPLAN

All students in Years 3, 5, 7 and 9 are expected to participate in the annual NAPLAN assessment.

Students with disability may qualify for adjustments that reflect the support normally provided for classroom assessments. You should first discuss the use of any disability adjustments for your child with your child's teacher.

A formal exemption may be granted for a student with disability that severely limits their capacity to participate in the assessment, or for a student who has recently arrived in Australia and has a non-English speaking background.

Your school principal and your local test administration authority can give you more information on NAPLAN Online disability adjustments or the process required to gain a formal exemption.

## NAPLAN Online 2019 timetable

The assessment window for NAPLAN Online is extended from three days provided for the paper test to nine days. This is to give schools more flexibility in scheduling and accommodate schools that may have fewer devices. The NAPLAN Online assessment window starts on Tuesday 14 May and finishes on Friday 24 May 2019.

The online tests must be taken in the following order:

Test	Duration	Order	Details
Writing	Year 3: 40 min. Year 5: 40 min. Year 7: 40 min. Year 9: 40 min.	To be completed in the first two days	Year 3 students do a paper-based writing test on day one only
Reading	Year 3: 45 min. Year 5: 50 min. Year 7: 65 min. Year 9: 65 min.	To be completed after the writing test	Students read a range of informative, imaginative and persuasive texts
Conventions of language	Year 3: 45 min. Year 5: 45 min. Year 7: 45 min. Year 9: 45 min.	To be completed after the reading test	This test includes spelling, grammar and punctuation
Numeracy	Year 3: 45 min. Year 5: 50 min. Year 7: 65 min. Year 9: 65 min.	To be completed after the conventions of language test	This test includes number and algebra, measurement and geometry, and statistics and probability

## What if my child is absent from school on assessment days?

Where possible, schools may arrange for individual students who are absent at the time of testing to complete missed tests at another time during the school's test schedule. Individual students are not permitted to sit NAPLAN online tests after Friday 24 May 2019.

## How is my child's performance measured?

Individual student performance is shown on a national achievement scale for each assessment. A result at the national minimum standard indicates that the student has demonstrated the basic literacy and numeracy skills needed to participate fully in that year level.

A NAPLAN individual student report will be issued by your child's school later in the year. If you do not receive a report, you should contact your child's school.

## How are NAPLAN results used?

- Students and parents may use individual results to discuss progress with teachers.
- Teachers use results to better identify students who would benefit from greater challenges or extra support.
- Schools use results to identify strengths and areas to improve in teaching programs, and to set goals in literacy and numeracy.
- School systems use results to review programs and support offered to schools.
- The community can see average school NAPLAN results at [myschool.edu.au](http://myschool.edu.au)

## Where can I get more information?

For more information about NAPLAN:

- contact your child's school
- contact your local test administration authority at [nap.edu.au/TAA](http://nap.edu.au/TAA)
- visit [nap.edu.au](http://nap.edu.au)

For information about how personal information for NAPLAN is handled by ACARA, visit [nap.edu.au/naplanprivacy](http://nap.edu.au/naplanprivacy)





# Woy Woy Public School

## PBL Behaviour Consistency Guide



Physical Contact	Arguing / Defiance	Verbal Bullying/ Harassment
Incidental or careless contact while playing	Indistinct mutterings or low level negative comment(s)	Isolated inoffensive or unintended put-down
Deliberate (but low-level) contact	Lack of respect in tone, manner and body language	Isolated but hurtful put-down
Hitting or striking with intent to hurt	Aggressive tone along with refusal to comply and/or offensive language	Repeated or sustained put-downs Use of highly offensive put-downs
Non-Compliance	Property Damage	Inappropriate/ Abusive Language
Slow to comply with requests	Accidental breakage due to careless use	Swearing when shocked or in pain
Needed to be asked a number of times before complying.	Accidental breakage due to deliberate misuse	Deliberately swearing when communicating with others
Refusal to comply with request	Intentional damage, including deliberate breakage, graffiti or vandalism	Abusive language directed at other students or teachers
Removal of self without compliance – walking away		Use of sexually explicit language
Disruptive Behaviour	Inappropriate Use of Technology	Out Of Bounds
Calling out/ talking while the teacher is speaking or failure to remain on-task	Forgot to hand in electronic device to office	Unintentional presence in an OOB area when wandering
Repeated instances of disruptive behaviour and time spent at the BOT	Isolated but deliberate non-compliance with handing in electronic device	Presence in OOB area for a sustained period
Spot over the course of a day/ week		Presence in OOB area in which there is some risk to self
Deliberately disrupting classmates, refusal to comply with teacher instructions and aggressive manner after time spent at BOT spot	Use of personal devices or school ICT equipment to harass or upset other students (cyberbullying)	Presence in OOB area and deliberately breaking school rules (stealing, damaging property, fighting etc).
	Intentional misuse or damage of school ICT equipment	
Lack of Equipment	Classroom Attendance	Possession of Banned Item/ Object
Not having correct equipment in class	Late to class when returning from a break – isolated incident	Possession of banned item(s) – first offence but complied with request for submission
Regularly failing to bring the required equipment*	Late to class when returning from a break – repeat offence	Possession of banned item(s) – repeat offence or argumentative
* Only blue level if willfully negligent with equipment (ie. no teacher correction or negative consequence if parents have failed to provide for student)	Leaving the classroom without permission and not returning for a sustained period	Possession of a dangerous or potentially harmful banned item or weapon
	Not returning to class after a break	

**Key:**  
 Green = Teacher correction procedure  
 Blue = Referral to executive  
 Red = Removal from classroom or playground

## PBL Behaviour Consistency Guiding Questions to Pose

Physical Violence	Arguing / Defiance	Harassment - DHV
How serious is the contact?	Under your breath. Entering a power struggle. Trying to provoke a response. NCI Targeted at staff Rudeness to staff	What about staff? Staff need to record actions Student orientated After hours implications?
The red zone is intentional. Motivation behind the act		
Failing to follow instructions	Damage Of Property/ Vandalism	Swearing/ Inappropriate Language
Lower level than arguing but leads on. Passive/aggressive To do with task completion	Misuse of equipment? Is the intent	What about the incidental verbal abuse of staff member? Talk about overhearing a student calling a teacher names but not directly.
Aggressive Play / Hands Off?	Inappropriate Use Of Technology/Equipment	Out Of Bounds
Rough play that may escalate. Against the rules is more serious. Play by the rules.	Need to define the phones! Bush lawyer element	Not following the principle of right place, right time, all the time.

Lack of Equipment	Classroom Attendance	Possession of Banned Item
At what point is there communication home? Offer of Student Assistance Have a support plan in place for countering the inevitable. Maybe subject specific requirements.	This could be leaving class early, taking too long out of class or going without permission. Out of Class, Need a Pass! Staff could deal with repeated offenses with consistent follow up. Persistent infractions is where the student doesn't care.	Talking about permanent markers, gum, lighters, spray cans, etc. Potential to be confiscated without provocation. Low level. Gentle reminder not followed There may be differences in the actual item. Mandatory banned item needs instant attention

**REMEMBER** – this is a process that staff must go through together- **IT IS A SUPPORTING DOCUMENT.**  
 Positive replacement behaviours **MUST BE TAUGHT** in PBL lessons.



# Please support our sponsors:

**HOME**  
TIMBER & HARDWARE  
GO WHERE THE TRADIES GO

**CAMPBELL**  
BUILDING MATERIALS  
PH 4341 1411  
OPEN 7 DAYS  
FOR ALL YOUR TIMBER, PAINT &  
HARDWARE SUPPLIES  
182 Blackwall Road, Woy Woy



Ph: 4341 3922

6 mths – Adult.  
Heated indoor pool.  
AustSwim qualified instructors.  
5 Mutu Street, Woy Woy NSW 2256

Learn to swim. For all Ages.

aquasplash@yahoo.com

**Bakers Delight**  
We're for real.  
Woy Woy

Shop 30 Railway Street  
Woy woy NSW 2256  
Ph: 4339 4941

Stephen McPhee M.P.S. B.Pharm (Owner)  
**Ettalong Pharmacy**  
249 Ocean View Road  
Ettalong Beach NSW 2257  
Ph: 4341 3338  
Fax: 4341 3834  
Email – ettpharm@gmail.com

**Chemsave**  
We have all the best products

Business hours ... Monday to Friday 8:30am to 5:30pm  
Saturday 8:30am to 12:30pm

*Is this the best chemist in the world, ever ?*

**DANCIN'ALITY**  
www.dancinallity.com.au Ph.4342 1195  
**MAKE YOUR MOVE**  
Come & Join the Peninsula's Leading Dance Studio  
2yrs to Adults - Suitable for Girls & Boys - Beginners to Adv Levels  
Qualified Teachers- Fully Equipped Studios  
RAD CLASSICAL BALLET - BAL JAZZ - TAP & HIP HOP - CHEER  
CONTEMPORARY - ACROBATICS - DRAMA - MUSICAL THEATRE  
CABARET - FITDANCE - BOYS ONLY HIP HOP & BREAK CLASS  
Also Offering Certificate II, III & IV in Dance  
**CONTACT US TODAY**



**Born 2 Rock Music School**  
**Music Lessons**  
**FREE TRIAL - FIRST LESSON**  
Guitar – Drums – Bass – Vocal – Keyboard  
Rock – Punk – Blues – Pop – Metal  
0411 893 141 www.born2rock.com.au  
4/2 Carnarvon Rd, West Gosford

**Crazy BARGAIN WAREHOUSE**

P: (02) 4343 1774 Shop 1, Pavilion Building  
29-37 George Street, Woy Woy, NSW, 2256

**STRATFORD MUSIC**

Piano - Guitar - Vocals - Drums - Violin - Viola  
Bass - Ukulele - Theory - Band & Ensemble  
stratfordmusic.com.au 4344 5809

**PARTY PUNCH**  
KIDS BIRTHDAY PARTIES  
BOOKINGS AVAILABLE  
CHANGE FITNESS & MARTIAL ARTS - 24 ALMA AVENUE WOY WOY  
Call Jase on 0433 321 273 or Kath on 0403 953 201  
email: changefitness@live.com

**LEARN TO SURF TERM 4 PROGRAM ONLY \$190pp!!**  
@ Umina Beach  
• 8 x 90min lessons (1 per week)  
• Starts Term 4 from Monday 22<sup>nd</sup> October  
Weekdays 4.15pm  
Saturdays: 9am & 11am  
Sundays: 1pm  
\*Tuesdays is 'Little Groms' (5yr-7yr), Wednesdays is 'Teens group' (12yr+). All other days = mixed ages  
• Includes soft surfboards, wetsuits, 2 coaches & surf education.  
**BOOK NOW**  
www.salssurfschool.com or call Sal on 0415 881 301



**PETER FLYNN BA. DIP.ED. TESOL**  
**ENGLISH LANGUAGE TUTOR**  
Specialising in Tutoring overseas students  
Will come to your home (Gosford area)  
Mob: 0405546744  
Home: 0243282221  
Email: peterflynnmail@gmail.com

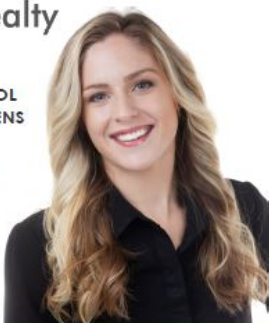


**Central Coast Realty**

REFER A FRIEND OR MENTION  
THIS AD & WOY WOY PUBLIC SCHOOL  
WILL RECEIVE \$500 TOWARDS CHILDRENS  
EDUCATION!

FOR EVERY PROPERTY CENTRAL COAST REALTY  
LISTS AND SELLS BY SOMEONE WHO MENTIONS  
THIS AD, WE WILL GIVE \$500 TO THE SCHOOL  
TO GO TOWARDS EDUCATION AND SUPPLIES!

JODIE WARREN 0431 484 552  
jodie@centralcoastrealty.net



**The Dance Shoppe**

for all your dance needs 0429 080 684







## Community Giving Space at the Peninsula Community Centre

**Open your Pantry,  
Open Your Heart.**

Donations are required for our Free Pop Up Op Shop - the Giving Space - on 11/4/19, to support local families in financial distress at our Bring Your Bills Day Event.



**We are seeking donations from families in our local community- from your home to the home of families in need.**

Donations of good quality items like toothpaste, shampoo, feminine hygiene products, soaps, non - perishable food items, nappies, Manchester, clothing and books.

Thank you for supporting our Centre and our community.

All donations can be dropped off any week day from 10am-4pm to Peninsula Community Centre, 93 McMasters Rd, Woy Woy. Please call us on 4341 9333 if you require any further information.

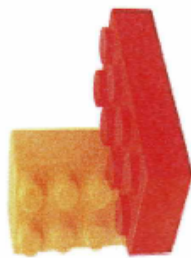


We also need good quality babies and children's clothes. Thank you for any assistance you can provide. Michelle Remy, Centre Manager.



Kincumber Uniting Church

## Lego Competition And Exhibition



**Prizes to be Won!!**

Download your Entry Form from:  
[www.kincumberunitingchurch.com](http://www.kincumberunitingchurch.com)

### ENTRY ON THE DAY

\$10.00 per family or \$4.00 per adult -  
Funds will support our ongoing  
programs with families and children

Saturday 6<sup>th</sup> April, 2019 - 9am to 2pm

At the Kincumber Car Boot Sale  
Kincumber Uniting,

Cnr. Killuna Road and Avoca Drive,  
Kincumber

Enquiries: Karen on 0447011282  
Or find us on Facebook







# Get on and Rock! At Your School!



## The Music Bus brings music education and fun to your school.

### About The Music Bus

The Music Bus visits over 250 schools a week, bringing music into the lives of over 4,000 students across Australia.

The Music Bus is the classroom (the bus!), teacher, instruments and curriculum all in one complete package – and it's at your school.

Made up of weekly half hour lessons, The Music Bus is fun, engaging and will inspire your child each and every week...

### our programs

The Music Bus offers modern and rock-style courses, using well-known songs to engage students at all ability levels. High quality instruments are provided and our experienced teachers use extensive backing tracks, developing confidence, rhythm and teamwork.



Cost: \$16 per weekly 30 min lesson (Drums \$18)

### why we're different

- We come to your school:** We offer all students, regardless of background or prior experience, specialist instrument lessons right on school grounds. That means less travel time for busy families.
- We're affordable:** Our lessons are around half the price of private tuition. We also supply all the instruments during class, taking the burden off having to buy one right away.
- Learning is fun:** The customised curriculum is set in a fun environment, focusing on music reading, playing, arranging and performing to help build skills and self-esteem - with lots of fun competitions and awards throughout the term.
- Glowing reviews:** The award winning Music Bus program has received positive feedback from the Dept of Ed and NSW Creative Arts Department - not to mention from countless parents and Principals in your community.

### what others are saying

"The Music Bus is fun, exciting and engages students in a wide variety of musical experiences at all ability levels and areas of interest including instrumental and vocal." Marie, Principal, NSW.

"The teacher is a highly motivated and extremely professional." Principal, QLD

"My daughter loves The Music Bus. It's an activity she can do in school hours - otherwise she probably would not be able to attend. It's such a great asset to have at school." Jade, Parent, QLD

"My son comes home enthusiastic about learning and practising his instruments." Naomi, Parent, NSW

"It's so great being at school. They are learning something new each week and the rapport the teacher has with the kids is wonderful." Sarah, Parent, NSW

\*All testimonials have been previously sourced from parents and school principals regarding The Music Bus. However, some names may be changed for privacy reasons.



If you like what you hear and would like to book lessons for your child contact us today.

**BOOK NOW - phone 1300 168 742  
or visit [www.themusicbus.com.au](http://www.themusicbus.com.au)**

**Not at your school yet? No problem - get in touch regardless and we can help get you started!**

Note: Music Bus lessons are also available at Weather Care, OOSH, and Home School.

**BOOK NOW!**