



Edition 73: 23 October 2020

## From the Principal

## Term 4 Week 2

**Welcome back everyone!** Here we are in the last school term of a very different and demanding year. 2020 has been a year like no other but with strength and resilience we have negated our way through COVID safe plans and restrictions to keep providing our students with the best educational continuity as possible. We are now starting the process of preparing our students for transition into their next year of learning. We are getting ready to welcome another group of Kindergarten children into our school as they join us for a COVID safe transition program starting Wednesday the 11<sup>th</sup> November with the first session and running every Wednesday until the 2<sup>nd</sup> December. This will give our new Kindergartens for 2021 a sound induction to what big school will be like.

Term 4 has many exciting educational experiences planned for our students. The assessment and reporting cycle for the end of year written student reports will see these reports sent home in week 9 of this Term. This is the week beginning the 7th December. We have some more exciting Rumbalara excursions running for Years 5 and 6, Years 1, 2 and Kindergarten. A lot of great education experiences will take place over the next 10 weeks. It will be a very productive and proactive end to the 2020 school year. Thank you as always for your ongoing support of our wonderful school.

### COVID updates

Please find the latest COVID 19 updates that directly affect Primary schools from the Department of Education attached. It is great to see we can now run Kindergarten Transition and have a Year 6 Farewell in a COVID safe way. A little bit more normality but still we must ensure that we adhere to a COVID safe plan to enjoy these treasured events and that means unfortunately we cannot have parents on the school site or at an off-site venue. All assemblies are still required to be only 15 minutes long. Once again your support has been amazing this year and we have really enjoyed working together to plan and safely work our way through such a difficult tapestry of the unknown.

### Book Week

Book Week this week saw children celebrating by being able to dress up in character on Thursday 22<sup>nd</sup> and parade for their Stage. Thank you for helping with all of those great outfits. Nice to see our teachers joining in the fun too. On Tuesday 20<sup>th</sup> we had a zoom author session for all children K-6 and we also had an online Book Fair. It was a timely opportunity to get some extra little items for Christmas gifts. Everyone loves a book!



## **School Leadership program for 2021**

This week saw the beginning of our school leadership program for Year 5 students who are interested in being a school leader for 2021. Mr Paul Betts is running the leadership program and the interested students have already been given a matrix of what they need to complete. Voting for school leaders will be held in week 8, 4th December so that successful students can be announced at our Presentation Day. Presentation Day will be another occasion where we will put COVID safe requirements into place. Further information will be relayed as plans formalise.

## **Selective School Applications for 2022 now open**

Applications for Year 7 entry to a Selective High School in 2022 are completed and submitted online. The form is available from **13 October 2020** until **16 November 2020**.

Go to [Application process](#) to apply.

## **Changes to the test**

The Selective High School Placement Test will change in 2021 for placement in 2022. The new test will have a greater emphasis on thinking skills, mathematical reasoning and problem solving. It will also adjust and balance the weighting given to Mathematics, English and thinking skills test components. These changes are in response to the findings of the 2018 Review of Selective Education Access report, commissioned by the NSW Department of Education. In 2021 the placement test will remain in a paper-based format before changing to a computer-based format in 2022. Assessments for the school assessment scores will be based on achievement on the school curriculum in Year 5 after 25 May 2020.

Download the [Information about placement in selective high schools for Year 7 entry in 2022 \(PDF 610KB\)](#)[External link](#) for an overview of the placement process. We encourage parents to monitor this website regularly for further updates on the Selective High School process for placement in 2022.

## **Applying without internet access**

Use the internet at a public library if you do not have access at home. If you don't use email, set up a web-based email account such as Gmail, Hotmail, Yahoo or similar. Use that account to register to apply. In the application you can select your preferred communications method as 'Postal mail' so future communication will be sent by post. Check your new email account for the confirmation email straight after submitting the application. Check the spam or junk folder as well as the Inbox.

Contact the [High Performing Students Team](#) for assistance if you have a disability that prevents you from using a computer.

## **Canberra excursion deposit refunds**

All parents who paid the deposit for the Year 6 Canberra excursions will be refunded this money over the next few weeks. Forms for parents to complete sign and send back to school are being sent out. Once they are returned the process to refund money paid into personal bank accounts will begin. Thank you for your patience with this as we all waited to see what may have been possible in COVID conditions.

## **2021 School Structure**

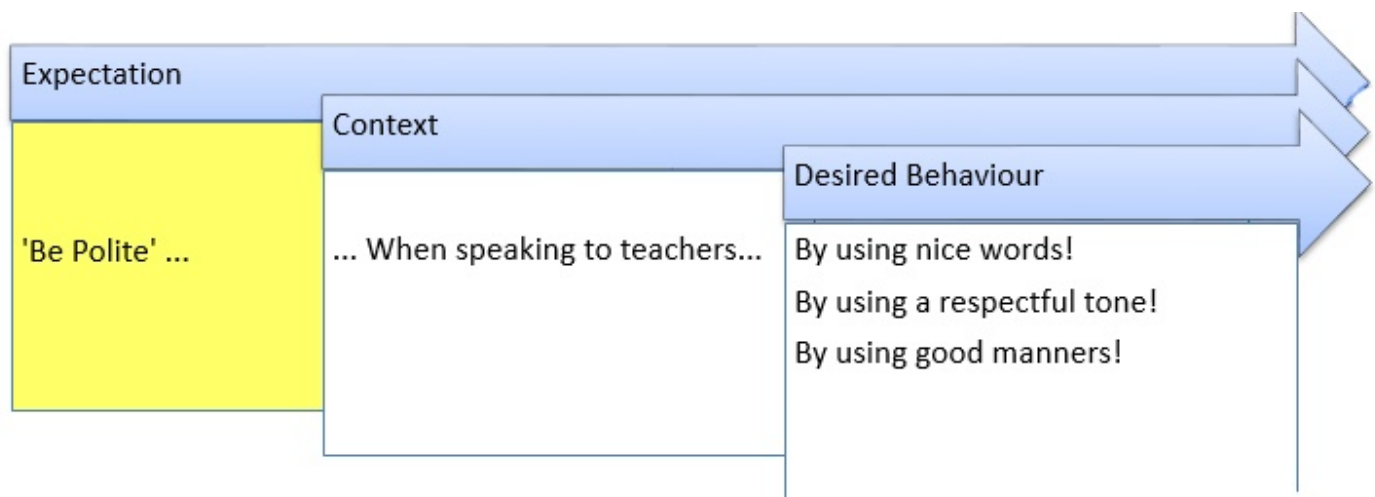
It is that time of year again when our school starts forward planning for the school structure for the next year. How we structure classes for 2021 will depend on the total number of students enrolled for 2021, the staffing entitlement the Department of Education allocates and numbers in each grade year. As always teachers are in the best professional position to make the decision about where a child should be placed for the optimum possible benefit of their educational progress. We know that children grow and change as they progress through school. They change socially and their associations with other children change. Academically they may need support or challenge.

As always it is important to remember that students are placed in classes to enhance their learning opportunities with sound teacher professional knowledge backed up with assessment, work task results and classroom teacher observation expertise on the educational, social and emotional growth of a child. We do welcome your input in this process if you believe there are **extenuating circumstances that need to be considered** when placing your child in a class for 2021. If this is so you are welcome to make an appointment to meet with us to discuss this matter. Alternately you can put your concerns in writing and address the correspondence to the Principal. Please always remember this process is totally confidential. All these requests will be taken into consideration but we cannot guarantee that it will be possible to fulfil these requests, as numbers, teachers available and professional educational judgement will determine the final outcome. Please ensure we have all of these concerns by the 20<sup>th</sup> November 2020. Classes will be formed at the end of the year for 2021 but as always may not be set until the beginning of 2021 when numbers of students on seats become apparent. Thank you for your continued support with this annual process.

Have a happy, healthy fortnight.

Ona Buckley and Dan Betts  
Principals

## Positive Behaviour for Learning (PBL) Weeks 1 & 2



Positive Behaviour for Learning (PBL) is a whole-school framework that promotes positive behaviour across our school. Every five weeks a team of teachers including the school Principal, executive staff and representatives from each stage analyse our school behavioural data. The results of this analysis leads our whole school implementation of Positive Behaviour for Learning. This fortnight teachers have been talking to students about how to 'Be Polite' especially when speaking to teachers and peers. Lessons have had a focus on using nice words, a respectful tone of voice and good manners. During week 3 & 4 our PBL focus will be on our 'Be Safe' expectation. Lessons will have a focus on being safe during break times and staying in supervised areas.





By starting a conversation with someone you could help a family member, friend or workmate open up. There are many agencies available to assist you or others who may need to talk. Please find a list below of support agencies that can assist people, including primary school-aged children, who may be at risk or experiencing emotional distress, including worried family and friends:

- Kids Helpline. 1800 55 1800. Phone support is there all day, every day. Online support is open from 8am-midnight every day (AEST)
- Suicide Callback Service. 1300 659 467. Phone support all day, every day, and follow-up calls.
- eHeadspace. 1800 650 890. Open 9am-1am daily (AEST).
- Lifeline 13 11 14. Phone support all day, every day. Online support 7pm-4am daily (AEST).
- Beyondblue 1300 22 4636. Phone support all day, every day. Online support 3pm-midnight every day.

If you have any questions regarding this fortnights PBL message program please feel free to contact Mrs Williams in the office.

## Breakfast club

We have a dedicated team of teachers who are committed to providing breakfast to our students every Monday, Wednesday and Friday morning throughout the term. Students are provided with a selection of toast options and fresh fruit. We would like to thank Bakers Delight at Woy Woy and Food Bank for their continue support and donations towards this valuable program.



Michelle Williams  
Assistant Principal  
Student Wellbeing

# New Online Enrolment System

Online enrolment for new students is now available at our school! If your child lives within the local area and is an Australian or New Zealand citizen and wishes to enrol at our school, you can enrol them through our school website under the 'Enrolment' tab.

The Online Enrolment System is designed to provide flexibility for parents to submit an Application to enrol in a NSW Government School online at the time that best suits them. The application can be accessed on all browsers and mobile devices including iOS and Android.

The online application process is currently restricted to:

- Enrolments into **local** schools only
- Children who are Australian citizens, New Zealand citizens or permanent residents
- Children who live in NSW

We offer our support and encourage you to complete your application to enrol online. If however, you do not feel comfortable completing an application online, a paper copy will be available for collection from the front office or can be downloaded from the Department's [going to a public school site](#).

If you would like further information please come and see us in the office.

## *We are now taking Preschool & Kindergarten Enrolments 2021*

# Important Attendance Information



All students should be at school unless:

- they have a medical certificate which states that they are unable to return to school due to an ongoing medical condition
- they are currently unwell.

If your child is unwell, do not send them to school. If they are unwell at school, you or your nominated emergency contact will need to collect them immediately. Please ensure your child's contact details are up to date. If a student is absent without a medical reason for more than three days, this will be recorded as an unauthorised absence and will be followed up by the school.

If you have any questions regarding your child's attendance at school please call the office on 43413555.

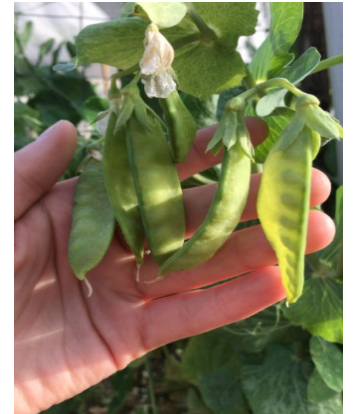
**If anyone in your family returns a positive result, please contact the school immediately and all family members are to isolate for the required length of time.**



# Gardening

We have seen so much growth in the garden over the school holidays. We now have tomatoes growing, our zucchini plants have started to produce flowers and we have had an abundance of snow peas and strawberries! We have been so excited and eager to try our produce we have been picking and eating it fresh out of the garden!

This week we have been working hard in our pumpkin patch. We have weeded, mulched and fertilised the area, and our plants have been loving it! In celebration we hung our pumpkin patch sign and made a Scarecrow. The kids had so much fun building the frame, stuffing the clothes with straw and drawing its scary face. We have decided to call our new friend Jeffery, and he has been the talk of our school.





# Guliyali Preschool News



This term our both groups of preschool children are participating in programs that promote physical health and wellbeing.

Our Seahorse friends have started a 'Kids on the Move' program through the Schools as Community Centres (SaCC) organisation which is situated on the school grounds of Woy Woy Public School. The children will develop skills such as gross and fine motor, coordination and turn taking as well as have the opportunity to practice fundamental movement skills such as throwing, catching, jumping, hopping and balancing.

Our Pelican friends have welcome Sensei's from Black Belt Martial Arts – Kincumber (BBMAK) into the preschool who will be delivering a program that promotes resilience, confidence, self-esteem and respect. The children have already learned several new words in the Japanese language and can't wait to continue to learn new skills throughout the term.

Celebrating Book Week has also seen many interesting and curious creatures in the preschool this past week. We heard what Book Week meant for the children and why they thought reading books is important...

## Why are books important?

Larissa - Books make you learn more and make you happy

James - Books calm you down

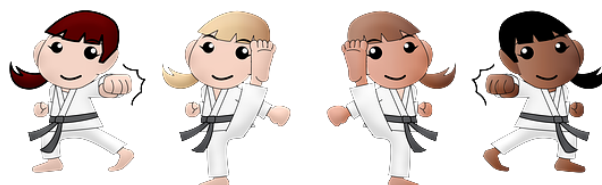
Finn - You can sit down and have a rest

Isla - They help you go to sleep

Joshua - Like a bed time story. My favourite is Pig the Pug



Whitney Williams  
Preschool Teacher



# Important things to remember

## Duck Season

Now that we are experiencing some warmer weather we are able to enjoy having ducklings wandering through our playground with their protective mothers. Please take the time to hold conversations with your children about the ducklings and the importance of enjoying them from a distance. We are very fortunate to have them choosing our school to raise their young and want it to remain a place where they feel safe.

## Bike safety

Riding bikes to school is a fun and great way to increase our levels of exercise, however with this comes some responsibilities. Woy Woy Public School is very proud of the relationships we have been able to form with our community however we have recently had some concerned citizens contact us about the riding behaviours of some of our students. If your child rides a bike to school I encourage you to discuss the following points with them-

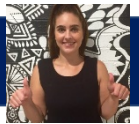
### Safe riding tips

- Always wear an approved bicycle helmet, properly fitted and fastened
- Always obey the road rules, including traffic lights, stop signs and give way signs
- Allow pedestrians a metre of space on shared paths, where possible.
- Always travel at a speed that is safe for you and the pedestrians you encounter, especially if you are riding on a footpath or shared path
- When approaching pedestrians, always ring your bell, slow down and prepare to stop and give way
- Ride in a predictable manner so that other road users do not have to react suddenly to your movements
- Give hand signals when changing lanes or turning left or right
- Make yourself visible by wearing bright, light or reflective clothing
- Plan your route using quieter streets, bicycle paths or shared paths
- Always be in control of your bicycle. It is an offence to ride with both hands off the handlebars, feet off the pedals or to carry anything that prevents you from having control.

Michelle Williams  
Assistant Principal  
Student Wellbeing







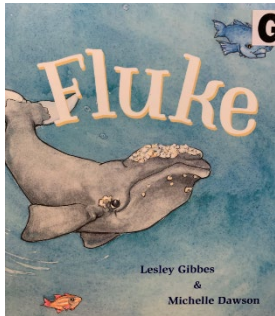
## Chaplain's Corner



Hi students,

I hope you all had a great weekend. My challenge for you this week is to be kind to as many people as possible! There are so many ways to be kind. Check out the following ideas and give them a go!





## Book Week

Wow! Woy Woy Public School has celebrated Book Week 2020 in a huge way this week. We spoke with a visiting author, Lesley Gibbes, on Tuesday via zoom. The students enjoyed listening to her books and her personal stories that inspired her to write her award winning books.



On Thursday, we enjoyed dressing up as book characters and participating in the annual book week parade. What fabulous costumes this year!

Every day this week, the book fair has been open for students to write their wish lists. Thanks to the families who were able to purchase items, as this enables the library to get new resources for the students to borrow. The Scholastic workers will be picking up the leftover books on Friday at lunch time. Please ensure you have returned your wish list with the receipt number by Friday morning to avoid disappointment.

Thanks everybody for your efforts and support this year during Book Week 2020.

Mrs Walker  
Teacher Librarian











Congratulations to the following student who has reached his 200 nights of home reading!

**200 Nights** Joey Timbs 2MB

## Upcoming Events



## Snack Shack News

Monday	26 <sup>th</sup> October	Vicki
Tuesday	27 <sup>th</sup> October	Pat
Wednesday	28 <sup>th</sup> October	Janet
Thursday	29 <sup>th</sup> October	
Friday	30 <sup>th</sup> October	
Monday	2 <sup>nd</sup> November	Pat
Tuesday	3 <sup>rd</sup> November	
Wednesday	4 <sup>th</sup> November	Janet
Thursday	5 <sup>th</sup> November	
Friday	6 <sup>th</sup> November	

**School hats are available  
from the canteen for \$13.00**

Online ordering is available [www.flexischools.com.au](http://www.flexischools.com.au) APP : Flexischools

We now have Sushi on our menu \$3.50

**Beef Teriyaki**  
**Chicken Teriyaki**



Our Canteen is looking for some more volunteers. If you have some spare time between 9:00am – 11:15am and hold a current Working with Children Check please leave your phone number with the school office and I will give you a call to arrange a suitable day.

Anne  
Canteen Supervisor



# Messages from the Office

## IMPORTANT INFORMATION

**\*\*\*\* Unless your enquiry is a matter of urgency please restrict entry into our office area \*\*\*\***

### Office Hours

School phones are manned from 8.30am until 3.15pm. The office window is opened at 8.30am and closed at 3.00pm however office staff are available until 3.15pm. There is a teacher on duty at the bus lines until 3.20pm.

### Changes to Going Home Arrangements

Could you please ensure that your child is aware of how they will be going home in the afternoon. If these arrangements change during the day it would be appreciated if you could contact the office prior to 2.00pm to ensure that the message is passed on to your child.

### Skoolbag APP and Website

You can download the WWPS Skoolbag APP to both iPhone and Android devices. Event updates and important information will be sent out via our Skoolbag APP and you can record your child's absence from school here as well. You will also find our School website at <http://www.woywoy-p.schools.nsw.edu.au/> which is regularly updated with events happening in our school. The School email address for correspondence is [woywoy-p.school@det.nsw.edu.au](mailto:woywoy-p.school@det.nsw.edu.au).

### Student Mobile Phones

Students who bring their mobile phone to school are asked to leave them at the office on their arrival and collect it at the end of the school day. Students are not permitted to have their phone with them during the day. It is also helpful if their name is on their phone.

### Late Arrival / Early Departure

If your child is late arriving to school or needs to leave early for an appointment, a partial absence slip is to be collected from the school office prior to going to your child's classroom. This slip is given to the classroom teacher.

### Payment of Money to the School

School fees and activity costs can be paid by credit card via the Woy Woy Public School website (<http://www.woywoy-p.schools.nsw.edu.au/>) using the 'Make a Payment' tab.

**\*\*\*\*\* EFTPOS IS NOW AVAILABLE IN OUR OFFICE \*\*\*\*\***

Understandably, our preferred method of payment for any school costs is contactless.

Payments for any school fees or activities can be made either by credit card via the Woy Woy Public School Website (<http://www.woywoy-p.schools.nsw.edu.au/>) using the 'Make a Payment' tab or for your convenience we have also installed an EFTPOS facility at the front office.



Should it be necessary for payment to be made using cash, monies should be placed in an envelope with your child's name, class and reason clearly noted. If payment is for multiple children, each must have their own envelope.

Thank you for your support in this matter.

Linda Goldsmith – School Administrative Manager

# Please support our sponsors:



**CAMPBELL**  
BUILDING MATERIALS  
**PH 4341 1411**  
OPEN 7 DAYS  
FOR ALL YOUR TIMBER, PAINT &  
HARDWARE SUPPLIES  
182 Blackwall Road, Woy Woy

***Bakers Delight***  
We're for real.  
Woy Woy

Shop 30 Railway Street  
Woy Woy NSW 2256  
Ph: 4339 4941



Stephen McPhee M.P.S. B.Pharm (Owner)  
**Ettalong Pharmacy**  
249 Ocean View Road  
Ettalong Beach NSW 2257  
Ph: 4341 3338  
Fax: 4341 3834  
Email - [ettpharm@gmail.com](mailto:ettpharm@gmail.com)  
Business hours ... Monday to Friday 8:30am to 5:30pm  
Saturday 8:30am to 12:30pm  
*Is this the best chemist in the world, ever ?*

**RESET your mind & try something NEW**  
**REUNITE with your FRIENDS**  
**REIGNITE your PASSION for the PERFORMING ARTS**



**RE-ENROL TODAY**  
02 4342 1195 [www.dancinallity.com.au](http://www.dancinallity.com.au)  
3 Mutu Street Woy Woy [info@dancinallity.com.au](mailto:info@dancinallity.com.au)

Present this  
Flyer for your  
FIRST WEEK  
FREE

RAD Classical Ballet - Jazz - Tap - Hip Hop - Contemporary -  
Lyrical - Cheer - Acro - Aerial - Burlesque - Technique &  
Conditioning - Drama & Musical Theatre

2 yrs to Adults - Beginners to Advanced Levels - Boys  
Only Classes - Qualified Teaching Faculty

We accept ACTIVE & CREATIVE kids vouchers

**RESET - REUNITE - REIGNITE**  
**RE-ENROL TODAY**



[www.dancinallity.com.au](http://www.dancinallity.com.au) **Ph.4342 1195**



JOIN US TODAY

We are seeking P/Time workers to assist our clients with  
cleaning and accessing the community within school hrs.  
Apply online through the Clean N Care website  
[www.cleannncare.com.au](http://www.cleannncare.com.au) or call us on 43681700!





## TERM 4 MUSIC BUS PICK UP

If your child is attending our Music Bus and they are finishing their lesson after school hours could you please collect your child from our school car park gate located in Park Road. We do remind all parents and carers that we are still following the Department Rules and Regulations Policy of **no parents on site**. Children will be directed to our car park gate after their lesson.

We do wish to thank you all for your co-operation.

### The Music BUS is back at your school!!



**WE ARE BACK!**  
Face to Face Lessons Resuming!

**THE MUSIC BUS**

#### Lessons Resuming

Following a short break due to COVID19, the Music Bus is back doing face to face lessons at your school. We have missed all our little rock stars and can't wait to see them!

#### How to Re-enrol

Call us on 1300 168 742 or email us at [contactus@themusicbus.com.au](mailto:contactus@themusicbus.com.au)

Lesson costs of \$20 per week (\$22 drums)

*Initial purchase of starter pack which includes a book and bag (\$30) required for all new students.*

Need to purchase books?  
Go to [www.themusicbusshop.com](http://www.themusicbusshop.com) to purchase books and instruments!

#### Don't Miss The Bus!

Due to reduced class sizes, spaces are limited so please act quickly to reserve your spot.

Current and NEW students all welcome to enrol

#### COVID POLICY:

- All teachers have complete Government Health Department certified training
- All equipment and surfaces disinfected between every class

Want Online Lessons?  
We now offer Online lessons until 7pm!  
Go to [www.themusicroom.com.au](http://www.themusicroom.com.au) for more info!



**keyboard**  
Kindy/Prep – Year 6



**Drums**  
Year 1 – 6



**Ukulele**  
Kindy/Prep – Year 6



**singing**  
Kindy/Prep – Year 6



**Guitar**  
Year 2 – 6



**Rockband**  
Year 1 – 6

**BOOK NOW – Phone 1300 168 742 or visit [www.themusicbus.com.au](http://www.themusicbus.com.au)**

Hot Food		Sandwiches	
Chicken Wedge	\$1.00	Bread & Butter (2 Slices)	\$1.50
Yummy Drummy	\$1.50	Buttered Roll	\$1.50
Snack Pie	\$1.50	Honey or Jam	\$2.80
Hot Dog	\$4.00	Vegemite	\$2.80
Puppy Dog	\$2.00	Cheese	\$2.80
Lite Meat Pie	\$4.00	Baked Beans	\$3.00
Sausage Roll	\$3.00	Ham	\$4.00
Cheese Pizza	\$3.50	Tuna	\$4.00
Ham & Cheese Pizza	\$3.50	Chicken	\$4.20
Ham & Pineapple Pizza	\$3.50	Salad Only	\$3.50
Beef Burger ( Lite Pattie)	\$4.50	Each Extra Filling	\$0.50
Cheese Burger ( Lite Pattie)	\$4.00	Extra Salad Filling	\$1.50
Chicken Burger	\$4.50	Wrap Extra	\$0.70
Hot Cheese Roll	\$3.50	Bread Roll Extra	\$0.80
Hot Chicken Roll	\$5.00	Multigrain/Wholemeal Bread	\$0.50
Hot Bolognese Roll	\$4.00	Gluten Free Bread	\$1.00
Nachos	\$4.50	Toasted Extra	\$0.50
Lasagne	\$3.50		
Fried Rice	\$3.50		
Mac & Cheese - Homemade	\$3.50	Chicken, Lettuce & Mayo - Half	\$3.20
Bolognese Pasta - Homemade	\$3.50	Chicken, Lettuce & Mayo - Full	\$5.40
Chicken Tortilla-Wedge,Lettuce,Mayo	\$3.50	Chicken Salad - Half	\$3.70
Chicken Soup	\$2.00	Chicken Salad - Full	\$6.40
Cheese & Bacon Roll	\$2.00	Ham,Cheese,Lettuce,Mayo - Half	\$3.00
Garlic Bread	\$0.10	Ham,Cheese,Lettuce,Mayo - Full	\$5.50
Tomato/BBQ Sauce Sachet	\$0.30	Ham Salad - Half	\$3.40
<b>Salad Plates inc: Beetroot</b>		Ham Salad - Full	\$6.10
Lettuce, Cucumber, Tomato, Carrot		<b>Toasted Sandwiches</b>	
Salad Plate	\$4.80	Cheese	\$3.30
Cheese Salad Plate	\$5.30	Cheese & Tomato	\$3.80
Tuna Salad Plate	\$5.80	Ham	\$4.50
Ham Salad Plate	\$5.80	Ham & Cheese	\$5.00
Chicken Salad Plate	\$6.00	Ham, Cheese & Tomato	\$5.50

Recess & Lunch Orders need to be on separate bags - Bags 10c each

CANTEEN OPENS AT 8.30AM & ORDERS MUST BE IN BY 8.50AM, THANK YOU

## WOY WOY PUBLIC SCHOOL - THE SNACK SHACK

WWPS Canteen Menu has been developed in accordance with the  
NSW Healthy School Canteen Strategy

Online ordering for your convenience is available at - [flexischools.com.au](http://flexischools.com.au)

The Snack Shack is always in need of volunteers,  
so if you have some spare time and would like to join  
our friendly team, drop in and see Anne  
to organise a day that suits you. (8.45am - 11.15am)

Breakfast		Refreshments	
Cheese & Bacon Roll	\$2.00	Flavoured Milk - Choc/Straw Only	\$2.00
Pikelets	\$0.10	Up & Go - Choc/Straw/Vanilla	\$2.00
		Juice Poppers - Apple, Orange, A/B	\$2.00
		Water - Large	\$1.50
		Water - Small	\$1.00
		Juice Cups	\$1.00
		Hot Chocolate	\$2.00
		Milkshake Large - Choc/Straw/Lime	\$3.00
		Milkshake Small - Choc/Straw/Lime	\$2.50
Snacks		Frozen Treats	
Rice Cakes	\$1.00	Vanilla Ice Cream (Light)	\$1.50
Rice Crackers	\$1.00	Frozen Juice Cup - A,O, A/B	\$1.00
Popcorn	\$0.60	Full Quelch Sip	\$1.00
Red Rock Chips	\$1.50	1/2 Quelch Sip	\$0.50
Mini Veggie Wrap		Frozen Yoghurt Pops	\$0.50
Veggie Bag	\$1.50	Blizzard Slushie	\$2.00
Muffin		Frozen Milk - Choc/Straw/Lime	\$1.00
Pikelets		Juicies - Tropical/Lemonade	\$1.00
Yoghurt			
Custard			
Fruit			

Recess & Lunch Orders need to be on separate bags - Bags 10c each

CANTEEN OPENS AT 8.30AM & ORDERS MUST BE IN BY 8.50AM, THANK YOU





## ACTIVE & ENGAGING OUT OF SCHOOL HOURS CARE



# Welcome to CUBBYOOSH at Woy Woy

We understand that finding the best care for your child is a big deal. Our team of passionate and nurturing educators are here to ensure your child receives high quality, active and engaging care, in a warm and supporting environment. For ease and convenience, our centre is located on-site at your child's school. We also offer various flexible attendance options including morning-only, afternoon-only, or both morning and afternoon, as well as permanent and casual bookings. We also offer Vacation Care across Sydney. We look forward to welcoming your child to Cubby00sh!

[Full service details overleaf >](#)

## WHY CHOOSE US?



### NUTRITIOUS FOOD:

Locally sourced nutritious breakfast and afternoon tea is served daily, with fresh fruit and water available at all times.



### ACTIVE AND ENGAGING PROGRAM:

Our program is designed around four tiers to ensure inclusive, active and engaging activities and resources for all - Extra-Curricular, Homework Club and/or Educational Resources, Activity Stations, and Free Choice Open Play.



### EXTRA-CURRICULAR ACTIVITIES:

Our services offer a variety of extra-curricular activities every term, from Brick Masters, to STEM Superstars, to the Cubby Cookoff Challenge and more! All extra-curricular activities are held on-site and are at **NO additional** cost to families.



### AMAZING EDUCATORS:

Our educators are highly qualified and trained to provide your child with a caring, safe and engaging environment. All educators have current and verified

Working with Children Checks and First Aid qualifications (including asthma and anaphylaxis).



### KINDERGARTEN TRANSITION:

We employ a range of strategies to ensure kindergarten students transition smoothly into before and after school care. We collect from / drop off to classrooms, provide bag tags detailing the OOSH sessions is scheduled to attend, and monitor how they settle in their first year.



### SAFETY:

Our safety policies include physical site security audits and processes, regular roll-calls and headcounts, and strict adherence to student to staff ratio requirements. Our team are experts in child safety and supervision.

PROGRAM	TIMES	FULL FEE	FEE AFTER 85% CCS*
Before School Care	6:30am-8:30am	\$21.00	\$4.04
After School Care	3:00pm-6:30pm	\$29.00	\$5.58

Fees & hours of operation as at Term 3 2020 and may be subject to change  
\*Child Care Subsidy can provide up to 85% of the cost of your child care fees



CALL TODAY: 1300 553 583



EMAIL US: [info@cubbyoosh.com.au](mailto:info@cubbyoosh.com.au)

Monday 21st- Thursday 24th December

# Surf Adventure



Surfing, Snorkelling,  
Beach fun & onsite  
adventure activities!



**7am- 5pm Daily! Breakfast through to afternoon tea provided! \$80 per day. Minimum 2 day booking required Discounted price for a 4 day booking! Ages 8- 15 years!**

**Registration Link:** <https://docs.google.com/forms/d/1IKe7AJK896VVDtffw7q1uOoF6M2I9Dvk9pQ9711pbrY/edit>

**Registrations Close 27/11/2020**

Join us in fun, friendship and Christian fellowship.

Contact us: 4355 3500



## HAVE A BLAST. BE PART OF THE CREW!

Get into Woolworths Cricket Blast. It's a fun and active program for kids of all abilities – whether it's your first time with a bat or you're a backyard cricket star!

- ✓ It's easy to join a crew and make awesome new friends.
- ✓ Wear the colours of your Big Bash heroes.
- ✓ Parents warm up, you can join in too!
- ✓ Outdoors, non-contact

### JUNIOR BLASTERS

AGES 5-7 | 60 mins | 6+ weeks

Learn new skills, including catching, throwing and teamwork, through fun game based activities.

Sign up now for your Starter Pack. Returning Junior Blasters score a Returner Pack with a Backpack, Ball and choice of bonus item!



STARTER Kit



RETURNER Kit



### MASTER BLASTERS

AGES 7-10 | 90 mins | 6+ weeks

Everyone gets a chance to bat, bowl and field in short, modified games of cricket. For kids with basic cricket skills.

Sign up now for your Master Blasters Pack!



## You could PLAY Woolworths Cricket Blast for Free!

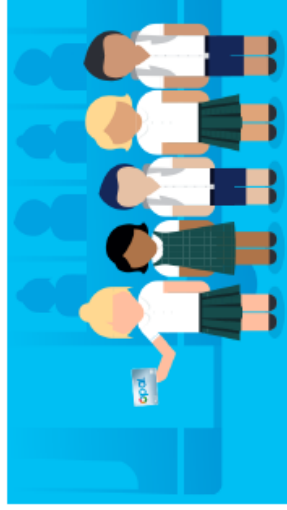
Thanks to the NSW Government, every student (K-12) is entitled to 2x\$100 Active Kids vouchers each calendar year. Remember to use your voucher when you sign up at [playcricket.com.au](http://playcricket.com.au)



Register now @ [playcricket.com.au](http://playcricket.com.au)



# School Travel for 2021



## 2021 school travel applications are now open

Applications for student travel in 2021 opened from Monday 12 October 2020.

Students who require a School Opal card or travel pass for 2021 can now [apply](#) online. A new application should be submitted if a student is applying for a school travel pass for the first time or requesting an additional pass as a result of a new shared parental responsibility situation (e.g. joint custody).

Students who have changed school/campus, changed address, repeated a year or received an expiry notification from Transport for NSW for their school travel entitlement should [re-apply or update their details](#).

\*Applications must be completed by the student's parent or legal guardian if the student is aged under 16 years. Students 16 years and over must complete the application form themselves.

Where there is a change of distance eligibility based on a student's grade, the system will automatically update a student's entitlement if they meet the new criteria. If they do not meet the new [eligibility criteria](#), they will receive an expiry notification via email.

Students who have an entitlement approved under a medical condition which is due to expire will receive a notification advising them to re-apply.

[Term Bus Pass](#) holders will receive a notification to re-apply.

If a student needs to update their information or re-apply, they should go online to <https://apps.transport.nsw.gov.au/ssts/updateDetails>

Applications need to be submitted before 31 December 2020 to ensure that current student entitlements are updated and their current entitlement/card remains valid. If their application is submitted after 31 December 2020, the system will automatically cancel an entitlement/card and a new one will need to be issued.

Students in the Opal network applying for a SSTS or Term Bus Pass entitlement for the first time will receive their card at their nominated postal address. Cards will be mailed out from January 2021.

Students residing in Rural and Regional (R&R) areas should receive their travel pass at the commencement of the new school year from their nominated operator, this may be distributed via the school or sent direct to their address. **Note:** some R&R operators do not issue travel passes. Students/Parents should confirm with their nominated operator if they do not receive a pass.

## New Concession Entitlement Cards

Transport for NSW will be replacing the below cards with Transport Concession Entitlement Cards (TCEC) from October 2020:

- Senior Secondary Student Concession Card (16 years and over) – also used by Mature Secondary Students (18 years and over), Distance Education Students and Home School Students
- Proof of Age card (when a student under 16 years of age looks older)
- Boarder Rail Pass.

All previous cards will be valid until they expire. Students who require a Transport Concession Entitlement Card should speak with their school administration staff.

Enquiries regarding school student travel can be submitted to Transport for NSW at: <https://transportnsw.info/contact-us/feedback/passes-concessions-feedback>

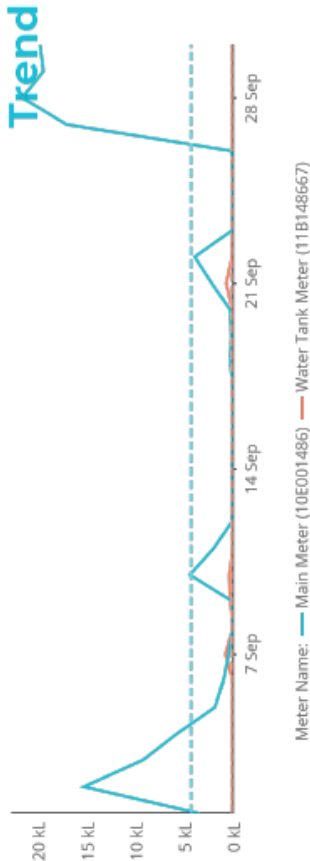
# Sep 2020 Water Report.

Woy Woy Public School



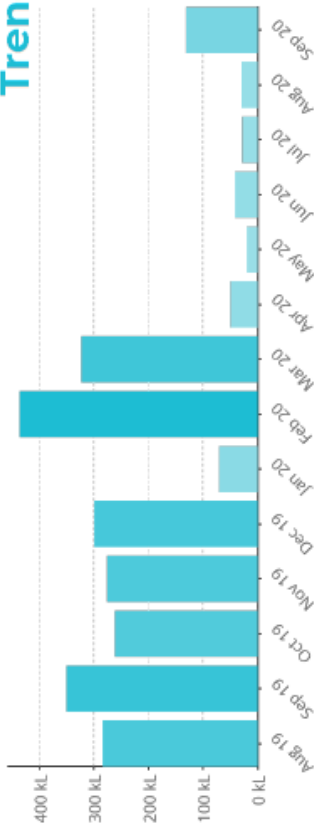
**131 kL** This Month  
41 kL 3 Months Ago  
350 kL 1 Year Ago

## Daily Usage

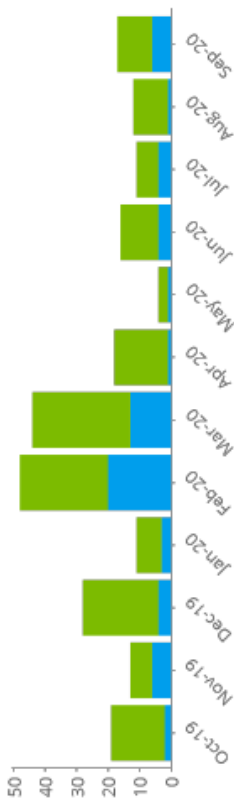


**2 kL** Average Daily Consumption

## Monthly Usage



## Alerts Generated



■ Disconnected ■ Zero Flow ■ Virtual Meter ■ Flow ■ Accumulated

**65**  
Flow  
Alerts

**176**  
Accumulated  
Alerts

**0**  
Zero Flow  
Alerts

**0**  
Disconnected  
Alerts

**0**  
Virtual  
Meter Alerts

If you require assistance interpreting your report or are in need of technical support, please contact us at 1300 368 603 or email [support@sums.com.au](mailto:support@sums.com.au)

**SUMS**





15<sup>th</sup> October 2020

## **Brisbane Water College – Umina Woy Woy Public School**

### **School Bus 2571 - PM SERVICE**

Dear Parents and Students,

Due to roadworks on George St, Woy Woy from Monday 26<sup>th</sup> October to Friday 30<sup>th</sup> October 2020, School Bus 2571 will operate via the following diversion:

The path of School Bus 2571 operates as normal from Brisbane Water College – Umina to Woy Woy Public School then continues Park Rd, right Blackwell Rd, left Railway St, right into Woy Woy Station then continues current path as Route 54.

The following stop will not be serviced during this period:

- Deepwater Plaza, George St (Stop ID: 2256214)

The closest bus stops available during this period are:

- Blackwall Rd after Victoria Rd (Stop ID: 2256197)
- Woy Woy Station

The path of the School Bus 2571 will revert to normal from Monday 2<sup>nd</sup> November 2020.

For further information please contact Busways Customer Service on 1300 69 2929.

Yours sincerely

**BUSWAYS GOSFORD PTY LTD**  
(28901) SB 2571 351K



**Busways**

15<sup>th</sup> October 2020

## **Brisbane Water College – Woy Woy Woy Woy Public School**

### **Route 53 - PM SERVICE**

Dear Parents and Students,

Due to roadworks on George St, Woy Woy from Monday 26<sup>th</sup> October to Friday 30<sup>th</sup> October 2020, Afternoon Route 53 will operate via the following diversion:

The path of Route 53 operates as normal from Brisbane Water College – Woy Woy to Woy Woy Public School then continues Park Rd, right Blackwell Rd, left Railway St, right into Woy Woy Station then continues current path as Route 57.

The following stop will not be serviced during this period:

- Deepwater Plaza, George St (Stop ID: 2256214)

The closest bus stops available during this period are:

- Blackwall Rd after Victoria Rd (Stop ID: 2256197)
- Woy Woy Station

The path of the Route 53 will revert to normal from Monday 2<sup>nd</sup> November 2020.

For further information please contact Busways Customer Service on 1300 69 2929.

Yours sincerely

**BUSWAYS GOSFORD PTY LTD**  
(28891) RTE 53 345K



# GOSFORD HIGH SCHOOL

Consider public education at the No.1 High School on the Central Coast.

## Applications open NOW for 2022



### Key Dates

Application website opens  
13th October 2020

Application website closes  
16th November 2020

**You must apply before this date.**

Test centre and test authority advice  
released 25th February 2021.

Selective High School Placement Test  
11th March 2021

Placement outcome information  
released 2nd July

For any enquiries, call GHS on  
(02) 4325 2048

Virtual tours will be available on the  
GHS website soon.

Application website:

<https://education.nsw.gov.au/public-schools/selective-high-schools-and-opportunity-classes/year-7>