



Edition 118:1 March 2024

## From the Principal

## Term 1 Week 5

2024 has seen a smooth and happy start to the school year. All of our students are settled into new classes with new teachers experiencing new routines and learning outcomes. Welcome to our new students and their families. May you have a long and happy educational journey with Woy Woy Public School. Exciting activities and learning opportunities have taken place over the last few weeks since the school year began.

Our annual Swimming Championships have seen a group of our students being selected to represent our school in the zone swimming carnival. We had the school student leader's induction where we welcomed a fine group of young school leaders for 2024. Our P&C were the lucky winners of an on-site breakfast broadcast from Star104.5 which saw an exciting morning for all on Wednesday 21 February. Some Central Coast Mariners came to visit and gave signed posters of the team to children who wanted one. We had Central Coast Juices promoting health drinks and a little petting farm with a baby goat, guinea pigs, a very friendly rooster and little fluffy ducklings. It was a great morning, and our P&C were donated \$500 dollars for our school. Thank you everyone for supporting our school.

### Information Sessions

Thank you to parents and caregivers for attending the recent information sessions about what is happening for your child in their stage of learning in 2024. Across the school teachers were pleased with how many people attended each session. We understand that many parents and caregivers cannot attend these sessions due to work commitments and other circumstances, so the hard copy booklet is available for each Stage which outlines what each grade in that Stage is working towards for 2024.

### What to do if you need information about your child

It is important for parents to be able to obtain information about their child regarding their academic progress and social interactions with others at school. The very first port of call should be your child's teacher. Your child's teacher knows your child well, they know where they are up to academically, they know how you can best support them at home, and they know if your child needs further support with literacy, numeracy or socialisation. Teachers cannot be accessed during times they are face to face teaching your child's class. They have a duty of care not only to your child but also to the many other children in their class. It is extremely important you do not expect them to talk to you when they are on duty. Teaching time is very valuable learning time for your child. Making an appointment where you and your child's teacher can sit in a quiet place and discuss your child's needs will produce a much better outcome. Parent teacher interviews are coming up in week 7 and 8 of this term (11 – 23 March). This will give all parents and caregivers the opportunity to meet with your child's teacher to discuss progress, learning goals and any needs your child might need and how to access support for them.

## Where to take your concerns

If you have a concern that needs to go higher than your child's teacher please make an appointment to see your Stage Assistant Principal.

**Preschool** – Mr Dan Betts

**Early Stage 1** (Kindergarten) – Mr Dan Betts

**Stage 1** (Year 1 & 2) – Mr Blake Rosewarn

**Stage 2** (Year 3 & 4)– Mrs Louise Rayner and Mr Mathew Wolski

**Stage 3** (Year 5 & 6)– Mrs Michelle Young

**Disabilities Program** (Support classes) – Ms Leanne Wiliame. You will find a whole school structure for 2024 with this newsletter.

If there is, a confidential matter or you feel you need further clarification on a concern then make an appointment to see the Principal. Do not let things fester and remember that second hand information may not always be true and that your child may not have all the facts. Please take the time to seek the right information.

*Ms Buckley*  
Principal

## Naplan 2024

### NAPLAN 2024 parent and carer information

Each year the National Assessment Program - Literacy and Numeracy (NAPLAN) is undertaken by students in Years 3, 5, 7 and 9. Students will participate in tests for writing, reading, conventions of language (spelling, grammar and punctuation) and numeracy.

NAPLAN 2024 will take place from **Wednesday 13 March** to **Monday 25 March**.

NAPLAN is just one part of our school learning assessment program. The tests assess literacy and numeracy skills your child is already learning at school.

In preparation for NAPLAN, our school will undertake activities to help students become familiar with the format and functionality of the online tests. These activities are not an assessment of student ability and will not be marked. Excessive preparation for NAPLAN is not required nor recommended.

The [public demonstration site](https://www.nap.edu.au/online-assessment/public-demonstration-site) (<https://www.nap.edu.au/online-assessment/public-demonstration-site>) is available to see the types of questions, tools and functions used in the NAPLAN tests.

Further information about NAPLAN is available on the [NESA website](https://educationstandards.nsw.edu.au/wps/portal/nesa/k-10/understanding-the-curriculum/naplan/parent-information) (<https://educationstandards.nsw.edu.au/wps/portal/nesa/k-10/understanding-the-curriculum/naplan/parent-information>).

If you have any questions about NAPLAN, please contact your child's teacher or Mrs Ford.

*Amy Ford*  
Assistant Principal, Curriculum & Instruction

# Positive Behaviour for Learning (PBL)

## Student Wellbeing

As part of Woy Woy Public School's focus on building a positive sense of wellbeing, various programs across the school are being implemented. These programs aim to develop each student's level of self-confidence, resilience and focus on developing a strong commitment to our three school expectations.



## Positive Behaviour for Learning Term 1 2024

Positive Behaviour for Learning (PBL) is an evidence-based framework that brings together the whole-school community to contribute to developing a positive, safe and supportive learning culture. PBL assists to improve social, emotional, behavioural and academic outcomes for children. Every 5 weeks executive members of our staff, teachers and students review the PBL data and discuss strategies to create a positive, safe and supportive learning environment. During these meetings we discuss our 3 whole school expectations and areas of future focus.

Please see below the PBL focus for the remainder of the term.

| Week  | Expectation    | Context               | Desired Behaviour  |
|-------|----------------|-----------------------|--|
| 6-7   | Be Engaged     | At school assemblies  | <ul style="list-style-type: none"><li>By arriving and sitting quietly</li><li>By displaying appropriate assembly manners</li><li>By applauding sensibly</li></ul>  |
| 8-9   | Be Respectful  | In all settings       | <ul style="list-style-type: none"><li>By being polite</li><li>By lining up</li><li>By being patient</li><li>By saying please and thank you</li></ul>   |
| 10-11 | Be Responsible | Safe play on the oval | <ul style="list-style-type: none"><li>By playing sports on the appropriate areas</li><li>By staying in bounds</li><li>By staying out of trees</li><li>By not playing with sticks</li><li>By sharing equipment</li><li>Keeping your hands to yourself</li></ul> |

## Zones of Regulation

The Zones of Regulation program is a whole school practice, and it is designed to teach us how to regulate our feelings, energy and sensory needs in order to meet the demands of the situation around us and be successful socially. Every classroom has Zone check in areas and strategies to support each emotion are explored each week during our timetabled PBL lessons. Zones of Regulation visual resources to use at home have been sent home to all of our new Kindergarten students and are available from the office if you require a new set.



Please see below the focus for the remainder of term:

| Week  | Lesson   |
|-------|--|
| 6-7   | Lesson 3 - My strategies/expect the unexpected                     |
| 8-9   | Lesson 4 - Thinking strategies: Size of the problem/growth mindset |
| 10-11 | Lesson 5 - Exploring calming strategies                            |

## Sparkle Girls

Stage 2 & Stage 3 Sparkle Girls will begin next week. Over this term, Mrs Smith will be delivering weekly programs designed to develop positive relationships with other students, teachers, and the broader community. The program also aims to improve resilience, positive self-image and enhance general wellbeing.

## Rock and Water

This term we are excited to offer the Rock and Water program to selected students across the school. The program helps students to develop an awareness of their own strengths and capabilities and the ability to play, work and live respectfully together. It also assists students in developing positive communication skills whilst building trusting and respectful relationships. The program is being delivered by Mr Cooke, our School Chaplain.

## Worry Woos

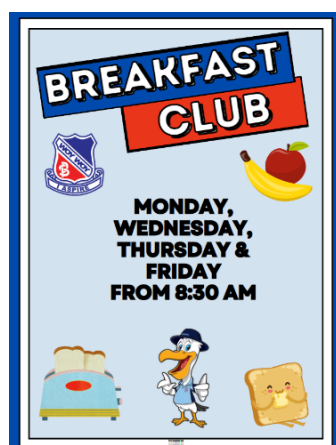
Worry Woos is a program designed to assist in developing emotional intelligence through exploring emotions, relationships and social-emotional skills. The Worry Woos program aims to increase younger children's confidence levels, develop a strong sense of identity and develop a strong sense of identity. The program is delivered by our Learning and Support Team teachers Mrs Greenwood and Mrs Mills.

## Stronger, Braver, Wiser

Grant Hickman of Focus Body and Soul supports students to make positive choices and demonstrate self-discipline. The program 'Stronger, Braver, Wiser' provides students with the encouragement to build aspirations for their future and be motivated to connect, succeed and thrive. Grant attends Woy Woy Public School on a Tuesday and Thursday to deliver his programs.

## Breakfast Club

Our dedicated staff continue to run a Breakfast Club on Monday, Wednesday, Thursday, and Friday mornings. We are very grateful to Bakers Delight, Woy Woy and Woolworths, Woy Woy, who continue to donate bread and fruit each week. We would like to thank our team of volunteers and community members who donate many of the spreadable items we use.

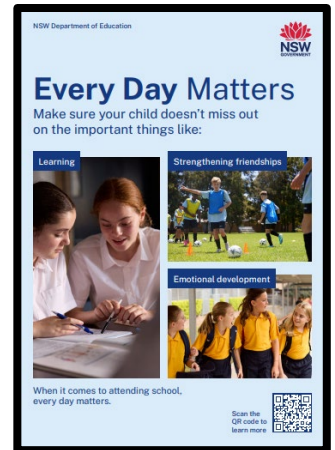


## Attendance

Education for your child is important and regular attendance at school is essential for your child to achieve their educational best and increase their career and life options. NSW public schools work in partnership with parents to encourage and support regular attendance of children and young people. When your child attends school every day, learning becomes easier, and your child will build and maintain friendships with other children.

### Parents and caregivers must ensure:

- Their children of compulsory school age are enrolled in a government or registered non-government school or, they are registered with the NSW Education Standards Authority (NESA) for Home Schooling.
- Their children who are enrolled at school attend every day the school is open for their instruction.
- They provide an explanation for absences by means such as a telephone call, written note, text message or email to the school within 7 days from the first day of any period of absence.
- They work in partnership with the school to plan and implement strategies to support regular attendance at school, including communicating with the school if they are aware of issues impacting on their child's attendance or engagement with school.



At Woy Woy Public School, we want to do all we can to be sure your child achieves their potential and enjoys being in school.

We know that school is the best place to learn. By attending school every day your child will get the most out of their learning and improve their career and life options.

When your child is absent it is important you let the school know, including the reason why, on the day or the day before. This helps make sure we know where our students are and offer support for you and your family if needed.

If you are having trouble getting your child to school every day or on time, please talk to our school staff so we can work together, because every day counts.

Missing a day here or there may not seem like much, but absences add up and can negatively impact your child's learning and wellbeing. When your child misses one day per fortnight, that's 4 weeks of missed learning in one year. Over an entire school journey this adds up to 1 year of lost learning.

**Mr Blake Roseworn**

Assistant Principal Wellbeing

## Information and Communication Technology WWPS

At the end of the 2023 school year WWPS was able to make a sizable investment in student accessible technology. Thanks to the school's investment in HP laptops, each student in 3-6 now has access to their own laptop device for use in the classroom, allowing them to better access the curriculum and develop their technology skills. Students have been briefed on the expectations of managing their own device and have been taking their responsibilities very seriously with all devices being well-looked after and charged each night ready for use the following day. Well done kids!

**Mr Wolski**

ICT coordinator

# Swimming

Our school community gathered on Tuesday, February 6th, at the Peninsula Leisure Centre for a day of thrilling competition and aquatic fun!

Students cheered on their peers as the Scott, Webb, and Davis teams went head-to-head in thrilling races and spirited challenges. From Backstroke to Butterfly events, our talented students showcased their skills and team spirit in the pool.

We extend our warmest congratulations to the students who gained representation to the SCCPSSA Zone Swimming Trial on the 12th of March. Your hard work and dedication have paid off, and we're incredibly proud of your achievements!

Thank you to our dedicated staff for the seamless running of the day. Your commitment to organising and supervising the event ensured its success. We also commend our students for displaying positive behaviour and sportsmanship throughout the carnival.

**Samuel Greig**  
Classroom Teacher



## Leaders Induction & SRC Assembly

On Friday 16 February we held our Leaders Induction and SRC special assembly. Parents and Carers were invited to pin on the students badges. Congratulations to all students for taking on leadership roles around the school. We are looking forward to a positive and productive year.

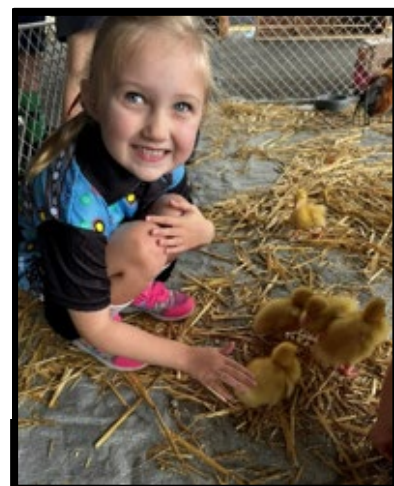
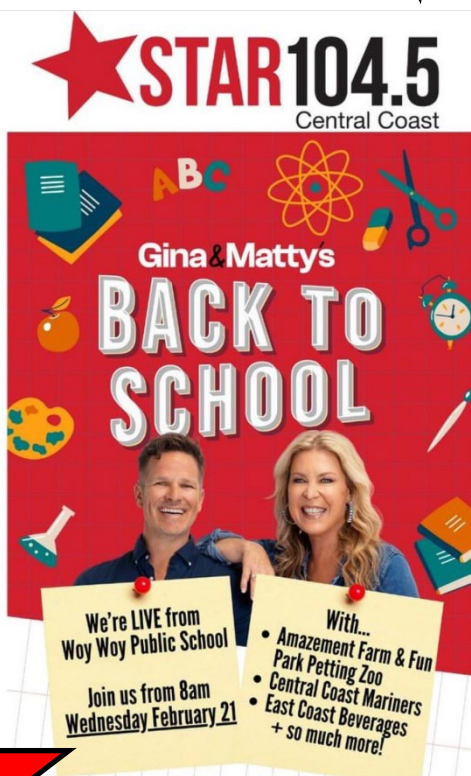


**Mrs Michelle Young**  
Stage 3 Assistant Principal



Thank you to STAR104.5 for visiting our school and the fantastic kind donation of \$500. Students did a wonderful job! Lots of fun and smiling faces.

Thank you to our P&C for making this happen.



## Assembly Awards

### K- 2 class awards

1B- MAX JOHNSON & DALTON LUCCA

1R - SAMUEL CELANO & TILLIE

2M - CATTALEYA ROYSTON & LEO HEWSON

2B - JAI CRAIG & ADDY DENLEY

### 3-6 class awards

3/4 M - MAX SUTTON & ALEXANDER BERNIE

3/4E - MATILDA FRAWLEY & SOPHIE KING

3/4W - WILLIAM BRANNIGAN & HOLLY HARRISON

4/5B - LENNY MCFADDEN & VAUGHN GORDON

5/6Y - ROARY GARDNER & LUCAS DE MARTIN

5/6F - JORDAN HARKINS & WILLIAM GLASON

5/6G - MAISIE KERKIN & CHAYAH

## Stage 1



It has been a pleasure to watch our Year 1 and Year 2 students transition seamlessly into their new classes. The students have been hard at work, developing their understanding of classroom routines and structures as well as engaging proactively with the curriculum. The Stage 1 teachers have been really impressed with their effort and are looking forward to the exciting learning journey ahead. This week, students have attended the Life Education Van, meeting 'Healthy Harold'. Life Education delivers evidence-backed, engaging education to children in their formative years, to build the skills they need to lead safe and healthy lives.

If you need to contact your child's classroom teacher, please notify them directly via email or the Sentral Portal to set up an appointment.

### Stage 1 Teachers



## Scripture & Ethics 2024

Scripture lessons are scheduled to begin in week 6 (Wednesday March 6). Lessons for students in Years 3-6 will be held each Wednesday between 9:00am and 9:30am. Lessons for students in Years K-2 will be held each Wednesday between 9:30am and 10:00am.

Combined scripture teaches a general Christian message, Catholic scripture follows the teachings of the Catholic faith, Ethics explores a variety of moral issues and how to deal with them and non-scripture is for students whose parents don't wish them to attend any of the offered options. Students will be placed in the same class they attended last year unless parents request an alternate placement in writing.

We are able to offer three Ethics classes this year, with Stage 2 beginning this term and Stages 1 and 3 beginning in Term 2. Expression of interest notes will be sent home to non-scripture students in Years 1 and 6 to fill remaining spots for Stage 1 and 3 classes. If you would like to become an Ethics volunteer teacher, please refer to the Primary Ethics website.

Please contact Mrs Pathirana if further information is required.

**Michelle Pathirana**  
Classroom Teacher

# Guliyali News

## What's happening this term?

Year 1 Cultural Continuum Activity will be in Week 10 on Wednesday 3 April at Woy Woy Public School. All the Aboriginal Year 1 students from our learning community will be coming along to learn some Traditional Dance and Stories.

Patrick has been working hard to make our Aboriginal Community Room feel like a community space. He has collected photos of all our Aboriginal Students and placed on the back wall. These photos will have the goals from the students Personalised Learning Pathways on Boomerangs around their photo. When the Mingaletta Aunties come to visit, this is the space the class will go to, we will also be using this space for our Yarn Up Afternoons.



Mingaletta received a donation of refurbished laptops from Sydney Trains at Transport for NSW, Mingaletta contacted Koorana AECG to donate 3 laptops to students in each school on the Peninsula. The 3 students that were chosen attended a presentation at Mingaletta to receive their laptops from Matt Longland (CEO of Sydney Trains). There were happy faces on all the students from each school.



## School Programs

This term our Aboriginal Education Officer, Patrick will be starting up his lunch time programs again. These include Cultural Dance, Calp Stick Making and other cultural activities.

Our Mingaletta Aunties have started their visits again with our Support Unit and working their way through the classes in the school sharing their knowledge and experiences with all the children in the school.

## Community News

Mingaletta, is the only Aboriginal and Torres Strait Islander community hub based on the Peninsula area of the Central Coast. It provides a range of services, programs and activities in health, welfare, culture, and education, aimed at improving the quality of life for our people. At Mingaletta, Aboriginal and Torres Strait Islander people are welcome to be part of the community and celebrate their culture.

## Diary Dates

- Koorana AECG Meeting – Wednesday 20 March
- Mingaletta Didge and Dance Group – Monday 4:00pm at Mingaletta, Every Monday during the school term
- Mingaletta Community Meetings – First Thursday of each month at 6:00pm
- Year 1 Cultural Continuum – Wednesday 3 April
- Yarn Up - Wednesday 12 April



## School Support Dog Program

We are incredibly excited to have our staff member Bonnie return in 2024. Bonnie is the perfect addition to our wellbeing team as a Certified Support Dog (in training). Bonnie is a Labradoodle and is becoming an integral part of our school community. Below, we have set out the benefits of site-based school support dogs.

### What are the benefits of having a school dog?

Numerous research studies have shown the benefits of support dogs in schools. Support dogs have been working in schools for quite some time now.

Evidence indicates that benefits include:

- Cognitive - companionship with a dog stimulates memory, problem-solving and game playing.
- Social - a dog provides a positive mutual topic for discussion, encourages responsibility, wellbeing, and focused interaction with others.
- Emotional - school dogs improve self-esteem, acceptance from others and lifts mood, often provoking laughter and fun. Dogs can also teach compassion and respect for other living things as well as relieving anxiety.
- Physical - interaction with a furry friend reduces blood pressure, provides tactile stimulation, assists with pain management, gives motivation to move, walk and stimulates the senses.
- Reading - reading to dogs has been proven to help children develop literacy skills and build confidence, through both the calming effect the dog's presence has on children as well as the fact that a dog will listen to children read without being judgemental or critical. This comforting environment helps to nurture children's enthusiasm for reading and provides them with the confidence to read aloud.

**Mr Blake Roseworn**

Assistant Principal Wellbeing

## Library timetable

| MONDAY | TUESDAY | WEDNESDAY              | THURSDAY | FRIDAY     |
|--------|---------|------------------------|----------|------------|
| 3/4W   | 1R      | Preschool<br>(Term2/3) | K-3C     | K-6PE/K-6W |
| 3/4LE  | 4/5B    | 2M                     | 5/6F     | 3/4M       |
| KC     | 5/6G    | 1B                     | K/1W     | 5/6Y       |
| 2B     |         | KS                     |          |            |

Please remember to return books on your library day!

Please bring a library bag to keep your books safe.

## Premier's Reading Challenge 2024

### Welcome to the NSW Premier's Reading Challenge

The Challenge aims to encourage a love of reading for leisure and pleasure in students, and to enable them to experience quality literature. It is not a competition but a challenge to each student to read, to read more and to read more widely. The Premier's Reading Challenge (PRC) is open to all NSW students in Kindergarten to Year 10, in government, independent, Catholic and home schools. If you need help using the website and the answer cannot be found on the PRC Support site, please contact us at [prc@det.nsw.edu.au](mailto:prc@det.nsw.edu.au)

### 2024 Challenge dates

**Monday 26 February 2024:** Challenge opens.

**Friday 23 August 2024:** Challenge closes for student entries.

**Friday 6 September 2024:** Challenge closes for coordinator validations.

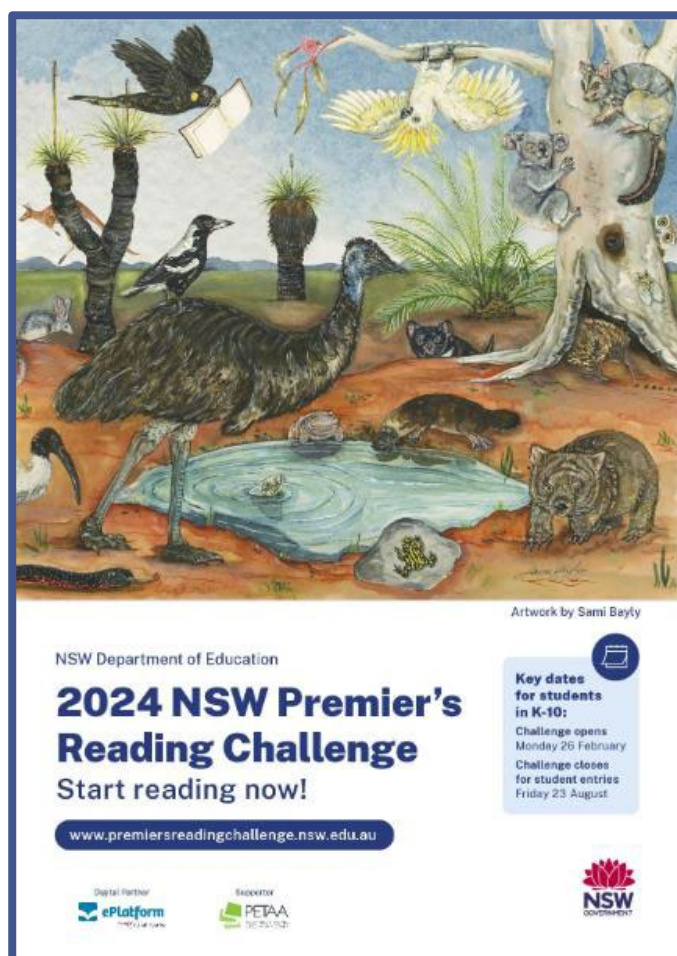
K-2: 30 books (including books read to the student by someone else). Online reading records completed by Mrs Walker.

3-6: 20 books. Online reading records completed by students.

Please refer to the website for further instructions/ rules. <https://online.det.nsw.edu.au/prc/home.html>

Contact Mrs Walker if you require any assistance with this.

**Cathy Walker**  
Teacher/Librarian



# Snack Shack News

APP: Flexischools

Online ordering is available [www.flexischools.com.au](http://www.flexischools.com.au)

There will be a special lunch menu for Harmony Day. Orders can be placed from Monday 5<sup>th</sup> March via Flexischools, or you can collect an order form from the Front Office or Canteen. All orders will need to be in no later than Wednesday 13<sup>th</sup> March.

I would like to thank all my volunteers for their hard work and commitment in helping our canteen run as smoothly as it does. I currently have a full roster for this term. If anyone would like to volunteer next term, please feel free to come and see me for a chat. Closed in shoes are to be worn and long hair to be tied back please. If you are unavailable for a shift please contact **Fiona on 0409 008 452**.

Thank you,

Fiona

### CANTEEN - HARMONY DAY

Thursday 21st March

Orders & Money need to be in no later than Wednesday 13th March.

Ordering via Flexischools or Order Form.

|                    |               |         |        |  |
|--------------------|---------------|---------|--------|--|
| AUSTRALIA          | Lite Meat Pie |         | \$5.00 |  |
| ASIA               | Sushi         | Chicken | \$4.00 |  |
|                    |               | Tuna    | \$4.00 |  |
| EUROPE             | Lasagne       |         | \$4.50 |  |
| AMERICA            | Hot Dog       |         | \$5.00 |  |
| Sauce Sachet       |               | Tomato  | 40c    |  |
|                    |               | BBQ     | 40c    |  |
| Drinks:            |               |         |        |  |
| Chocolate Milk     |               |         | \$2.50 |  |
| Strawberry Milk    |               |         | \$2.50 |  |
| Apple Juice        |               |         | \$2.20 |  |
| Paradise Punch     |               |         | \$2.20 |  |
| Apple/Blackcurrant |               |         | \$2.20 |  |
| Water              |               |         | \$1.50 |  |
|                    |               |         | TOTAL  |  |

NAME: \_\_\_\_\_

CLASS: \_\_\_\_\_



# Message from the Office



## Important Parking Message

The staff parking area inside the school gates on both Park Road and Bowden Road is for **Staff Use Only**. Parents dropping off and collecting their children from school, Music Bus or Cubbyhouse BASC are asked to park outside the school grounds. This is a Department of Education directive.

## Office Hours

School phones are manned from 8.30am until 3.15pm. The office window is opened at 8.30am and closed at 3.00pm however office staff are available until 3.15pm. There is a teacher on duty at the bus lines until 3.20pm.

## Changes to Going Home Arrangements

Could you please ensure that your child is aware of how they will be going home in the afternoon. If these arrangements change during the day, it would be appreciated if you could contact the office prior to 2.00pm to ensure that the message is passed on to your child.

## Communications

### *Sentral Parent Portal*

You can download the Sentral Parent Portal APP to both iPhone and Android devices. Event updates and important information will be sent out via our Sentral Parent Portal APP, and you can record your child's absence from school here as well. Communications with teachers are also managed through this APP.

### *Website, Facebook and Email*

You will find our school website <http://www.woywoy-p.schools.nsw.edu.au/> and Facebook page are regularly updated with events happening in our school. The school email address for correspondence is [woywoy-p.school@det.nsw.edu.au](mailto:woywoy-p.school@det.nsw.edu.au).

## Student Mobile Phones

Students who bring their mobile phone to school are asked to leave them at the office on their arrival and collect it at the end of the school day. Students are not permitted to have their phone with them during the day. It is also helpful if their name is on their phone.

## Late Arrival / Early Departure

If your child is late arriving to school or needs to leave early for an appointment, a partial absence slip is to be collected from the school office prior to going to your child's classroom. This slip is given to the classroom teacher.

## Change to Family Details

To update any changes to family details like phone numbers, address etc. please use the form available from the school office, this booklet or send it in via the Sentral Parent Portal APP.

## Payment of Money to the School

Payments for any school fees or activities can be paid by EFTPOS at the school office or by credit card via the Woy Woy Public School website (<http://www.woywoy-p.schools.nsw.edu.au/>) using the 'Make a Payment' tab. During 2024 the school will be migrating to a new payment system via the Sentral Parent Portal.

Our preferred method of payment is contactless however should it be necessary for payment to be made using cash, money should be placed in an envelope with your child's name, class and reason clearly noted. Thank you for your support in these matters.

*Linda Goldsmith*

School Administrative Manager

# Please support our sponsors:



**HOME**  
TIMBER & HARDWARE  
GO WHERE THE TRADIES GO

**CAMPBELL**  
BUILDING MATERIALS  
**PH 4341 1411**  
OPEN 7 DAYS  
FOR ALL YOUR TIMBER, PAINT &  
HARDWARE SUPPLIES  
182 Blackwall Road, Woy Woy

Stephen McPhee M.P.S. B.Pharm (Owner)  
**Ettalong Pharmacy**  
249 Ocean View Road  
Ettalong Beach NSW 2257  
Ph: 4341 3338  
Fax: 4341 3834  
Email – [ettpharm@gmail.com](mailto:ettpharm@gmail.com)



.....  
Business hours ... Monday to Friday 8:30am to 5:30pm  
Saturday 8:30am to 12:30pm  
.....  
*Is this the best chemist in the world, ever ?*

*Bakers Delight*  
We're for real.  
Woy Woy

Shop 30 Railway Street  
Woy Woy NSW 2256  
Ph: 4339 4941



## 2024 School Structure

| Stage                             | Class     | Teacher  | Supervisor                   |
|-----------------------------------|-----------|--|------------------------------|
| Early Stage 1                     | Preschool | Alix Leo / Whitney Williams / Melanie Smith (W) / Rhonda Arnot / Courtney Miller | Dan Betts                    |
| Early Stage 1                     | KC        | Nerida Ceaser  | Dan Betts                    |
|                                   | KS        | Bianca Sozomenou   |                              |
|                                   | K/1W      | Calindy Weston   |                              |
| Stage 1                           | 1B        | Emily Bartlett   | Blake Rosewarn               |
|                                   | 1R        | Meg Rathbone   |                              |
|                                   | 2B        | Corrie Barrett   |                              |
|                                   | 2M        | Neeley Molinaroli  |                              |
| Stage 2                           | 3/4M      | Emma Mallarky  | Louise Rayner<br>Matt Wolski |
|                                   | 3/4LE     | Natascha Lenz (T/Thu/F) / Tiffany Elliot (M/W)                                   |                              |
|                                   | 3/4W      | Matt Wolski  |                              |
|                                   | 4/5B      | Chenara Bradbury (M/T/W/F) Andrew Brady (Th)                                     |                              |
| Stage 3                           | 5/6F      | Jessica Finley   | Michelle Young               |
|                                   | 5/6G      | Semuel Greig   |                              |
|                                   | 5/6YE     | Michelle Young (M,W,Thu,F) / Tiffany Elliott (T)                                 |                              |
| Disabilities                      | EI        | Leanne Willame (W) / Kimberley Evans (M/T) / Cathy Riley                         | Leanne Willame               |
|                                   | K-6PE     | Michelle Pathirana (M,T,W) Kimberley Evans (Th,F) Christine Hozack               |                              |
|                                   | K-6W      | Wayne Price / Vicki Phipps   |                              |
|                                   | K-4P      | Jack Prime / Jodie Tutauha   |                              |
|                                   | K-6C      | Donna Corda / Kath Elliott   |                              |
|                                   | 3-6G      | Pete Graham/ Susan Hefford / Josh Sankey   |                              |
|                                   |           |  |                              |
| Office Staff                      |           |  |                              |
| Principal                         |           | Ona Buckley  | Ona Buckley                  |
| DP (Teaching & Learning)          |           | Dan Betts  |                              |
| AP (C&I)                          |           | Amy Ford   |                              |
| AP (Student Wellbeing)            |           | Blake Rosewarn   |                              |
| SAM – School Admin Manager        |           | Linda Goldsmith (T/W/T/FR) Sandra Tuthill (M)                                    |                              |
| SAO – School Admin Officers       |           | Kath Fletcher / Sandra Tuthill / Sharon Quinlan / Marnya Michie                  |                              |
| GA – General Assistant            |           | Mark McParlane (Macca)   |                              |
| School Chaplain                   |           | Gary Cooke   |                              |
| School Counsellor                 |           | Beth Russell   |                              |
| School Canteen Manager            |           | Fiona Fry  |                              |
| Other Teaching/Non-Teaching staff |           |  |                              |
| Itinerant Hearing Teacher         |           | Sophie Tomlinson   | Marie O’Malley               |
| Librarian                         |           | Cathy Walker (M/T/W/Th) / Melanie Smith (F)                                      | Amy Ford                     |
| Small group tuition/EALD          |           | Sue McLean (M/T/W)   |                              |
| Support RFF                       |           | Jenni Chapman (T)  |                              |
| Learning and Support Teacher      |           | Lisa Mills /Michelle Greenwood   |                              |
| SAKG – Cooking / Gardening        |           | Melanie Smith (M/T/Thu)  | Michelle Young               |
| K-2RFF Music                      |           | Emma Jones (M,W)   | Louise Rayner                |
| 3-6RFF Music                      |           | Louise Rayner (T/W/F)  | Ona Buckley                  |
| Aboriginal Education Worker       |           | Patrick Pumpa  | Blake Rosewarn               |
| School Learning Support Officers  |           | Isacc Buatava / Angela Cameron /Jai Chand /Haylee Dwyer                          | Lea Wiliame                  |
|                                   |           | Stella Lennard /Courtney Miller /Lorilee Reeding /Jodi Roth                      |                              |
|                                   |           | Jessica Waters   |                              |
| Schools as Community Centre       |           | Philippa Skipper (M/T/W/Th)  | Ona Buckley                  |
| School Cleaners                   |           | Lorlan Ratahi and Greg Sillick   | Ventia                       |



## Important Information for Term 1

Dear Principal,

**Welcome back! We're looking forward to working together in the year ahead for smooth school bus services. Here are some important links and information to help you navigate 2024.**

**Your first point of contact at Busways for:**

- service queries / feedback / bell time changes  
is [infoline@busways.com.au](mailto:infoline@busways.com.au) or 1300 29 29 69

### INFORMATION LINKS FOR SCHOOL BUS SERVICES

1. Timetable information - [busways.com.au](https://busways.com.au) or [transportnsw.info](https://transportnsw.info)
2. Opal card applications - [School Student Travel Scheme](#)
3. Student transport resources [for teachers](#)

### UPCOMING CAMPAIGNS TO SEND TO STUDENTS IN TERM 1

There are several communication campaigns scheduled for your school in Term 1, which we ask you to pass on to students, parents and carers. These address safety and behaviour, and full details for each campaign will be sent on or around the dates advised below -

Please let those who manage your school communications know about these upcoming campaigns.

### **We're here to help!**

We look forward to providing a safe and reliable school bus service and to managing any issues that may arise so please don't hesitate to contact us on the email and phone number provided.

All the best for the year ahead! We appreciate the work you do.

Stephen Lumley

Stakeholder Engagement Manager



## COME TRY NETBALL WITH TKT OCEAN BEACH NETBALL CLUB

TKT Ocean Beach Netball Club offers a fun, family friendly environment to learn netball skills & play games down at Lemon Grove Park Ettalong.

**Net-Set-Go is for all children turning 5 to 10 years in 2024.**

**Junior competition 11 to 17 years**

**Seniors 18 years & above.**

**Boys are invited up to 12 years.**

**Registration is on PlayHQ from 8th Jan - 18th Feb 2024**

<https://www.playhq.com/netball-australia/org/tkt-ocean-beach-netball-club/500d54df/register>

In person registration & uniform fitting can be done on 3rd Feb 9am-1pm at 53 Breeze st, Umina or 13th Feb 6pm-8pm at 20 Donald ave, Umina

**Winter season starts on Saturday 6th April 2024**

So join up! Get Active & find Fun, Fitness & new Friendships in a team sport with TKT!

For more info contact Michelle on 0449528072



## BE BUS AWARE

Wait until the bus has gone then use a safe place to cross



## Bus Safety Week 24 Feb to 1 Mar

Bus Safety Week raises awareness for students and all road users on how to stay safe on and around buses, helping to reduce injuries and fatalities.

## Tap on and tap off every time



## Tap on Tap Off Every Time 11 Mar

In March you will get a toolkit to communicate to your school community encouraging students to tap on and tap off every time they travel on a bus.

## Bus Safety Program for Schools



## Bus Safety Education Term 1 to 3

Primary schools can now book Busways' free Bus Safety Education sessions in 2024. Click on [this link](#) to book now or read our promotion arriving 8 February.

# No smoking means no vaping



## No Vaping campaign 26 Feb

Did you know, last year 60% of complaints about vaping on buses were about school students vaping? Vaping is now banned on NSW public transport!

# REGISTER NOW 2024 SEASON WITH WWJRLFC

Register for the following ages;

Mixed Tackle - U6 - U11

(If you turn 4 or 5 in 2024 you can play in u6)

Boys Tackle U12- U17

Girls League Tag U14 & U16

Girls Tackle U11, U13, U15 and U17  
visit: [www.playrugbyleague.com](http://www.playrugbyleague.com)



For more information visit our Facebook page  
Woy Woy Junior Rugby League Football Club  
or call/text or email

Ian Willis 0421 780 513

Brooke Preston 0421 276 284

[secretary.woywoyroosters@gmail.com](mailto:secretary.woywoyroosters@gmail.com)



CRICKET NSW

# Central Coast Term 1 Programs

20 FEB

FAGAN PARK - 5 WEEKS / \$25

22 FEB

BAKER PARK - 5 WEEKS / \$25

REGISTRATION LINK: [HTTPS://WWW.PLAYHQ.COM/CRICKET-AUSTRALIA/REGISTER/714AAB](https://www.playhq.com/cricket-australia/register/714AAB)



## why we're different

- 1. We come to your school:** We offer all students, regardless of background or prior experience, specialist instrument lessons right on school grounds. That means less travel time for busy families.
- 2. We're affordable:** Our lessons are around half the price of private tuition. We also supply all the instruments during class, taking the burden off having to buy one right away.
- 3. Learning is fun:** The customised curriculum is set in a fun environment, focusing on music reading, playing, arranging and performing to help build skills and self-esteem - with lots of fun competitions and awards throughout the term.
- 4. Glowing reviews:** The award winning Music Bus program has received positive feedback from the Dept of Ed and NSW Creative Arts Department - not to mention from countless parents and Principals in your community.

## Benefits of Music Education

Numerous studies have suggested that studying music stimulates parts of the brain that are linked to maths and cognitive abilities, which may give your child an advantage in the classroom.

Learning an instrument can be a great way of enhancing kids' social skills. Learning in a group can help encourage youngsters to interact with their peers by working towards common goals and listening to each other!

Research has shown that listening to and playing music can stimulate brain development and improve memory which will increase their learning abilities.

Proud Business Partners of:



If you like what you hear and would like to book lessons for your child contact us today.

**BOOK NOW – phone 1300 168 742 or visit [www.themusicbus.com.au](http://www.themusicbus.com.au)**

**Not at your school yet? No problem - get in touch regardless and we can help you get started!**

Note: Music Bus lessons are also available at Vacation Care, OOSH and Home School.

# Get on and Rock! At Your School!



## The Music Bus brings music education and fun to your school.

### About The Music Bus

The Music Bus visits over 300 schools a week, bringing music into the lives of over 5,000 students across Australia.

The Music Bus is the classroom (the bus!), teacher, instruments and curriculum all in one complete package - and it's at your school.

Made up of weekly half hour lessons, The Music Bus is fun, engaging and will inspire your child each and every week.

### our programs

The Music Bus offers modern and rock-style courses, using well-known songs to engage students at all ability levels. High quality instruments are provided and our experienced teachers use extensive backing tracks, developing confidence, rhythm and teamwork.

**Cost: \$20 per weekly 30 min lesson (Drums \$22)**

\*Lessons paid by the term on commencement



**BOOK NOW – phone 1300 168 742 or visit [www.themusicbus.com.au](http://www.themusicbus.com.au)**

# IMAGINE THE FUN

**FREE Cricket**  
at Woy Woy  
Public School



Cricket NSW is excited to announce  
a **FREE Cricket Blast Pop Up**

Register here:

[https://www.playhq.com/cricket-  
australia/register/dd4b07](https://www.playhq.com/cricket-australia/register/dd4b07)



Cricket is a sport for all!

- 4-week, 60-minute after school program for ages 5-10
- Like OOSH but with cricket!
- **FREE** Program with Cricket NSW Blast Coaches
- All gear provided - just come and have fun!
- Wednesdays after school: 20 March - 10 April 2024

## Scouts is for everyone!

Scouting is a worldwide movement that has shaped the development of children and young adults for over 100 years. With over 18,000 youth and adult members from various cultural and religious backgrounds and with varying abilities, Scouts is one of the largest and most successful youth organisations in New South Wales!

Today's Scouts can take part in an extraordinary variety of outdoor activities, from 'traditional Scouting skills' such as camping and bush craft, through to more extreme challenges such as abseiling, overnight hiking, rafting, canyoning, rock climbing, sailing and even flying! Scouts also have the opportunity to become involved in performing arts, leadership development, community service, amateur radio operation, environmental projects and large-scale events.

[scoutreach.org.au](https://scoutreach.org.au)

To find your closest Hunter and Coastal Scout Group contact: **1300 858 464**



Joey Scouts (ages 5-8\*)

Cub Scouts (ages 8-11)

Scouts (ages 11-14)

Venturer Scouts (ages 14-17)

Rovers (ages 18-25)

Leaders (ages 18+)

\*A young person can join the Joey Section at any time after their 5th birthday provided they are attending school full time.



SCAN ME

# LITTLE LEARNERS *for big Kids*

A free pre-literacy program focusing on sounds for children entering school in 2025/26. Lots of fun with craft activities, story time and songs

Woy Woy Schools as Community Centres (SaCC)

Woy Woy Public School

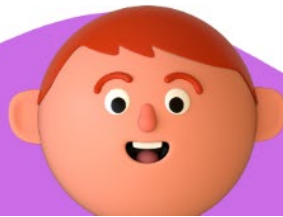
Thursdays 9.15am-10.15am

Commencing Thursday, 8 February 2024

Registrations Online: [www.ccsacc.com/woy-woy](http://www.ccsacc.com/woy-woy)

**Information: Philippa Skipper, Facilitator**  
e: [philippa.skipper@det.nsw.edu.au](mailto:philippa.skipper@det.nsw.edu.au)  
m: 0477 317862

*A Department of Education Project*



# KIDS ON THE MOVE

Fun Outdoor  
Activities for  
Kids Age 3.5-5

**STARTS  
THURSDAY,  
8 FEBRUARY  
2024**

Woy Woy SaCC  
From 9.30 am

**REGISTER  
ONLINE**  
[WWW.CCSACC.COM/  
WOY-WOY](http://WWW.CCSACC.COM/WOY-WOY)

## ACTIVITIES:

- Balancing
- Ball Skills
- Group Time
- Circuit fun
- Team Work



**Information:**

Philippa Skipper: 0477 317862

e: [philippa.skipper@det.nsw.edu.au](mailto:philippa.skipper@det.nsw.edu.au)

A DEPARTMENT OF EDUCATION PROJECT



## P&Cs CALL FOR ACTION

Join Us on Saturday 6<sup>th</sup> April 2024  
Central Coast Challenge from Killcare to Terrigal



Liesl Tesch MP  
NSW Member Gosford

Dr Gordon Reid MP  
Federal Member  
Robertson

David Harris MP  
NSW Member Wyong  
Minister for Central Coast



## TO RAISE FUNDS

karey@careful Storybooks  
for Special Needs Children  
on the Central Coast

Walk either 20km, 10km or 5km. There is also a wheelchair leg covering the last 2km to Terrigal. We'll have drone photos taken of all walkers on The Skillion.

**Challenge 1.** The full distance 20 km. Meet 08:30 at Killcare SLSC. Start at 09:00. The first leg is approximately 10 km to MacMasters SLSC, second leg 5 km to Avoca SLSC and the final leg is 5 km to finish at The Skillion.

**Challenge 2.** Distance 10 km. Meet 11:00 at MacMasters SLSC. Start at 11:30. The first leg is approximately 5 km to Avoca SLSC and final leg 5 km to The Skillion.

**Challenge 3.** Distance 5 km. Meet 13:00 at Avoca Beach SLSC. Start at 13:30. The single leg is approximately 5 km to finish at The Skillion.

**Special Wheelchair Challenge.** Just under 2km. Meet 13:15 at Avoca North SLSC. Start at 13:45. The single leg is approximately 2 km and suitable for wheelchairs.



## HOW TO REGISTER and RAISE FUNDS

1. Nominate your Waterline Champion
2. Go to [www.waterlinechallenge.org](http://www.waterlinechallenge.org)
3. Click on the Waterline Challenge Central Coast
4. Click on REGISTER OR DONATE
5. This takes you to where our Campaign is set up. You then create your sub-Campaign to enter details and share with family & friends
6. We will then be in touch to confirm how far you are going to walk and where you will start on the day

REGISTER OR DONATE

Further details: [julian.day@bigpond.com](mailto:julian.day@bigpond.com) 0413 309 056